

Datasheet for ABIN197376
anti-NCOA1 antibody (Tyr529)[Go to Product page](#)

2 Images

Overview

Quantity:	0.1 mL
Target:	NCOA1
Binding Specificity:	Tyr529
Reactivity:	Human, Mouse, Rat
Host:	Rabbit
Clonality:	Polyclonal
Conjugate:	This NCOA1 antibody is un-conjugated
Application:	Western Blotting (WB), Immunohistochemistry (Paraffin-embedded Sections) (IHC (p))

Product Details

Immunogen:	The antiserum was produced against synthesized non-phosphopeptide derived from human Src around the phosphorylation site of tyrosine 529 (P-Q-Yp-Q-P).
Specificity:	The antibody was affinity-purified from rabbit antiserum by affinity-chromatography using epitope-specific immunogen. Src antibody AP02687PU detects endogenous levels of total Src protein.
Purification:	Immunoaffinity Chromatography.

Target Details

Target:	NCOA1
Alternative Name:	SRC1 (NCOA1 Products)
Background:	Synonyms: Proto-oncogene c-Src, Proto-oncogene tyrosine-protein kinase Src, c-Src, pp60c-src

Target Details

Gene ID:	6714
NCBI Accession:	NP_005408
UniProt:	P12931
Pathways:	Intracellular Steroid Hormone Receptor Signaling Pathway , Nuclear Hormone Receptor Binding , Chromatin Binding , Regulation of Lipid Metabolism by PPARalpha

Application Details

Application Notes:	Western blot (1/500-1/1000). Immunohistochemistry on Paraffin Sections (1/50-1/100). Other applications not tested. Optimal dilutions are dependent on conditions and should be determined by the user.
--------------------	---

Restrictions:	For Research Use only
---------------	-----------------------

Handling

Concentration:	1.0 mg/mL
Buffer:	PBS (without Mg ²⁺ and Ca ²⁺), pH 7.4, 150 mM NaCl, 0.02 % Sodium Azide as preservative and 50 % Glycerol.
Preservative:	Sodium azide
Precaution of Use:	This product contains sodium azide: a POISONOUS AND HAZARDOUS SUBSTANCE which should be handled by trained staff only.
Handling Advice:	Avoid repeated freezing and thawing.
Storage:	-20 °C
Storage Comment:	Store the antibody undiluted (in aliquots) at -20 °C.

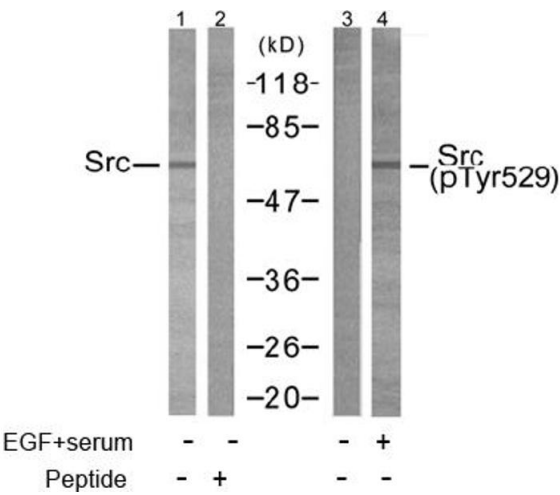


Image 1.

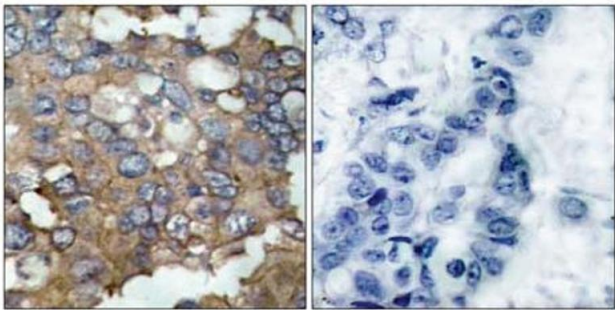


Image 2.

Peptide - +