

Datasheet for ABIN197420
anti-BCR antibody (Tyr177)



[Go to Product page](#)

2 Images

Overview

Quantity:	0.1 mL
Target:	BCR
Binding Specificity:	Tyr177
Reactivity:	Human, Mouse
Host:	Rabbit
Clonality:	Polyclonal
Conjugate:	This BCR antibody is un-conjugated
Application:	Western Blotting (WB), Immunofluorescence (IF)

Product Details

Immunogen:	The antiserum was produced against synthesized non-phosphopeptide derived from human Bcr around the phosphorylation site of tyrosine 177 (P-F-Yp-V-N).
Specificity:	This antibody AP02709PU detects endogenous levels of total Bcr protein.
Purification:	Immunoaffinity Chromatography using epitope-specific immunogen.

Target Details

Target:	BCR
Alternative Name:	BCR (BCR Products)
Background:	The breakpoint cluster region protein (Bcr) is best known to be involved in genomic translocation with fusion partner Abl (Cbr-Abl) causing chronic myelogenous leukemia (CML). This 160 kDa protein contains a serine/threonine kinase domain, an SH2 binding domain, a GTP/GDP

Target Details

exchange domain and a C-term domain which functions as a GTPase activating protein for p21rac and CDC42. Additionally, Bcr is involved in signal transduction and can down regulate Ras mediated cell signaling.Synonyms: BCR1, Breakpoint cluster region protein, D22S11, NY-REN-26, Renal carcinoma antigen NY-REN-26

Gene ID: 613

NCBI Accession: [NP_004318](#)

UniProt: [P11274](#)

Pathways: [Regulation of Leukocyte Mediated Immunity](#), [Platelet-derived growth Factor Receptor Signaling](#)

Application Details

Application Notes: Western blot: 1/500-1/1000. Immunofluorescence: 1/100-1/200.
Other applications not tested.
Optimal dilutions are dependent on conditions and should be determined by the user.

Restrictions: For Research Use only

Handling

Concentration: 1.0 mg/mL

Buffer: PBS (without Mg²⁺ and Ca²⁺), pH 7.4, 150 mM NaCl, 0.02 % Sodium Azide and 50 % Glycerol.

Preservative: Sodium azide

Precaution of Use: This product contains sodium azide: a POISONOUS AND HAZARDOUS SUBSTANCE which should be handled by trained staff only.

Handling Advice: Avoid repeated freezing and thawing.

Storage: -20 °C

Storage Comment: Store the antibody (in aliquots) at -20 °C.

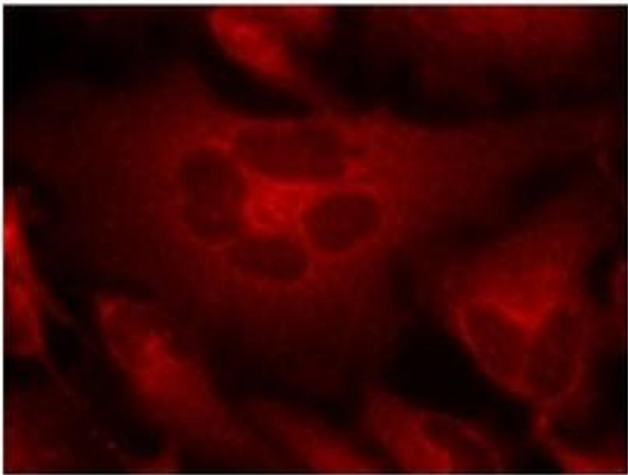


Image 1.

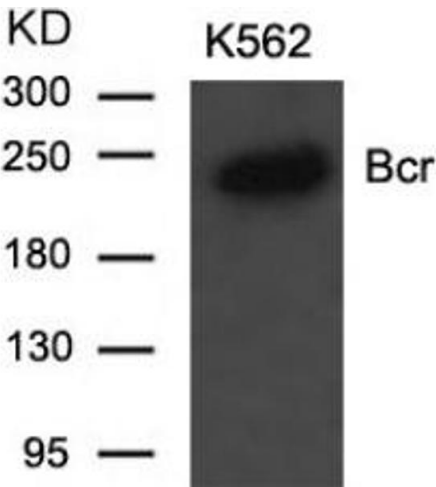


Image 2.