

Datasheet for ABIN197454

**anti-Stathmin 1 antibody (Ser24)****3** Images[Go to Product page](#)

## Overview

Quantity:	0.1 mL
Target:	Stathmin 1 (STMN1)
Binding Specificity:	Ser24
Reactivity:	Human, Mouse, Rat
Host:	Rabbit
Clonality:	Polyclonal
Conjugate:	This Stathmin 1 antibody is un-conjugated
Application:	Western Blotting (WB), Immunofluorescence (IF), Immunohistochemistry (Paraffin-embedded Sections) (IHC (p))

## Product Details

Immunogen:	Synthetic non-phosphopeptide derived from human Stathmin 1 around the phosphorylation site of serine 24 (I-L-Sp-P-R).
Specificity:	Stathmin 1 antibody detects endogenous levels of total Stathmin 1 protein.
Purification:	Affinity chromatography

## Target Details

Target:	Stathmin 1 (STMN1)
Alternative Name:	Stathmin / STMN1 ( <a href="#">STMN1 Products</a> )
Background:	This protein is a ubiquitous cytosolic phosphoprotein proposed to function as an intracellular relay integrating regulatory signals of the cellular environment. The encoded protein is involved

## Target Details

in the regulation of the microtubule filament system by destabilizing microtubules. It prevents assembly and promotes disassembly of microtubules. Alternatively spliced transcript variants encoding the same protein have been identified.Synonyms: LAP18, Leukemia-associated phosphoprotein p18, Metablastin, OP18, Oncoprotein 18, Op18, Phosphoprotein p19, ProsoLin, Protein Pr22, pp17, pp19

Gene ID:	3925
NCBI Accession:	<a href="#">NP_001138926</a>
UniProt:	<a href="#">P16949</a>
Pathways:	<a href="#">MAPK Signaling</a> , <a href="#">Microtubule Dynamics</a>

## Application Details

Application Notes:	Western Blot: 1: 500approx. 1: 1000. Immunohistochemistry: 1: 50approx. 1: 100 (suitable for paraffin-embedded sections). Other applications not tested. Optimal dilutions are dependent on conditions and should be determined by the user.
Restrictions:	For Research Use only

## Handling

Concentration:	1.0 mg/mL
Buffer:	PBS (without Mg2+ and Ca2+), pH 7.4 containing 150 mM NaCl, 0.02 % sodium azide and 50 % glycerol.
Preservative:	Sodium azide
Precaution of Use:	This product contains sodium azide: a POISONOUS AND HAZARDOUS SUBSTANCE which should be handled by trained staff only.
Handling Advice:	Avoid repeated freezing and thawing.
Storage:	-20 °C

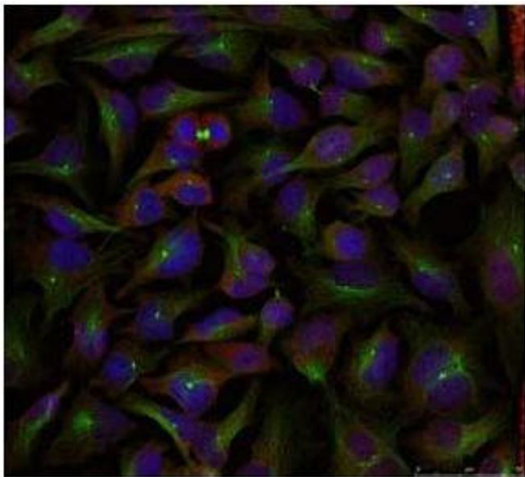
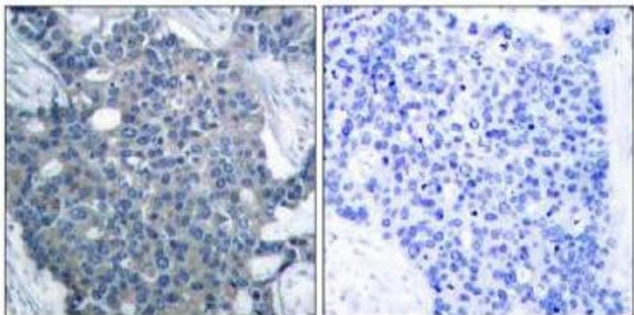


Image 1.



Peptide - +

Image 2.

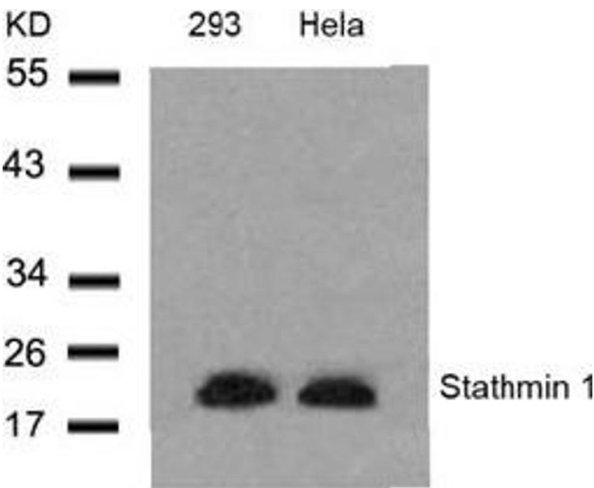


Image 3.