

Datasheet for ABIN197456

anti-Stathmin 1 antibody (Ser37)

3 Images



[Go to Product page](#)

Overview

Quantity:	0.1 mL
Target:	Stathmin 1 (STMN1)
Binding Specificity:	Ser37
Reactivity:	Human, Mouse, Rat
Host:	Rabbit
Clonality:	Polyclonal
Conjugate:	This Stathmin 1 antibody is un-conjugated
Application:	Western Blotting (WB), Immunofluorescence (IF), Immunohistochemistry (Paraffin-embedded Sections) (IHC (p))

Product Details

Immunogen:	The antiserum was produced against synthesized non-phosphopeptide derived from Human Stathmin 1 around the phosphorylation site of serine 37 (P-L-SP-P-P).
Specificity:	This antibody AP02727PU detects endogenous levels of total Stathmin 1 protein.
Purification:	Immunoaffinity Chromatography using epitope-specific immunogen.

Target Details

Target:	Stathmin 1 (STMN1)
Alternative Name:	Stathmin / STMN1 (STMN1 Products)
Background:	Synonyms: LAP18, Leukemia-associated phosphoprotein p18, Metablastin, OP18, Oncoprotein 18, Op18, Phosphoprotein p19, Prosolin, Protein Pr22, pp17, pp19

Target Details

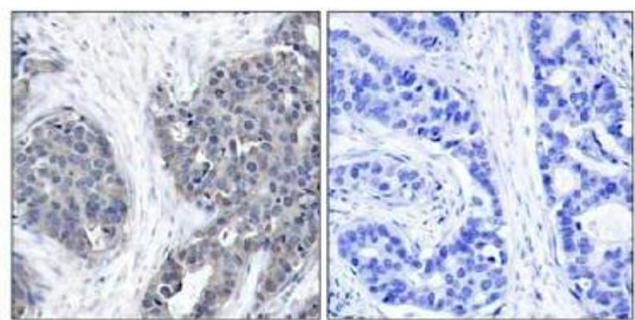
Gene ID:	3925
NCBI Accession:	NP_001138926
UniProt:	P16949
Pathways:	MAPK Signaling , Microtubule Dynamics

Application Details

Application Notes:	Western blot: 1/500-1/1000. Immunofluorescence: 1/100-1/200. Immunohistochemistry on Paraffin-Embedded Sections: 1/50-1/100. Other applications not tested. Optimal dilutions are dependent on conditions and should be determined by the user.
Restrictions:	For Research Use only

Handling

Concentration:	1.0 mg/mL
Buffer:	PBS (without Mg2+ and Ca2+), pH 7.4, 150 mM NaCl, 0.02 % Sodium Azide and 50 % Glycerol.
Preservative:	Sodium azide
Precaution of Use:	This product contains sodium azide: a POISONOUS AND HAZARDOUS SUBSTANCE which should be handled by trained staff only.
Handling Advice:	Avoid repeated freezing and thawing.
Storage:	-20 °C



Peptide - +

Image 1.

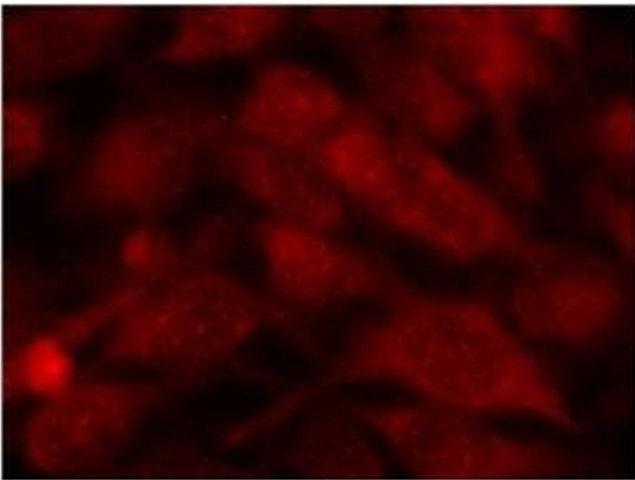


Image 2.

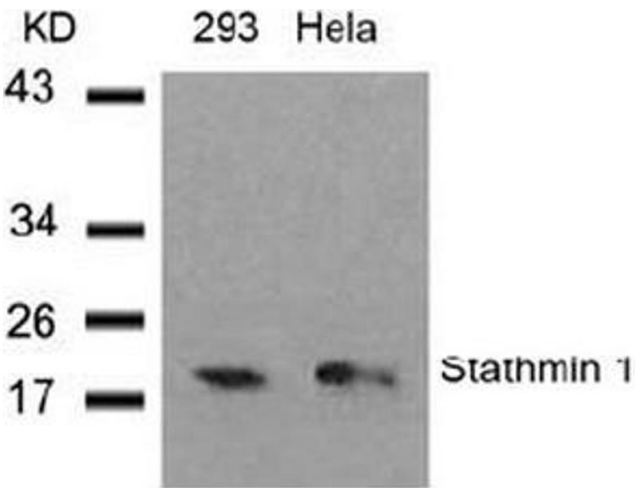


Image 3.