

Datasheet for ABIN197538
anti-DOK1 antibody (Tyr398)



[Go to Product page](#)

3 Images

Overview

Quantity:	0.1 mL
Target:	DOK1
Binding Specificity:	Tyr398
Reactivity:	Human, Mouse, Rat
Host:	Rabbit
Clonality:	Polyclonal
Conjugate:	This DOK1 antibody is un-conjugated
Application:	Western Blotting (WB), Immunofluorescence (IF), Immunohistochemistry (Paraffin-embedded Sections) (IHC (p))

Product Details

Immunogen:	The antiserum was produced against synthesized non-phosphopeptide derived from human p62Dok around the phosphorylation site of tyrosine 398 (E-G-Yp-E-L).
Specificity:	This antibody detects endogenous levels of total p62Dok protein.
Purification:	Affinity chromatography

Target Details

Target:	DOK1
Alternative Name:	DOK1 / p62 Dok (DOK1 Products)
Background:	DOK1 (Downstream of tyrosine kinase 1, or Docking protein 1) is believed to be a mainly cytoplasmic adaptor protein which down-regulates mitogen-activated protein kinase activation,

Target Details

inhibits cell proliferation and transformation, and promotes cell spreading and cell migration.
DOK1 appears to be a negative regulator of the insulin signaling pathway. Synonyms: Docking protein 1, Downstream of tyrosine kinase 1, p62(dok), pp62

Gene ID: 1796

NCBI Accession: [NP_001184189](#)

UniProt: [Q99704](#)

Application Details

Application Notes: Western blot: 1/500-1/1000. Immunofluorescence: 1/100-1/200. Immunohistochemistry on Paraffin-Embedded Sections: 1/50-1/100.
Other applications not tested.
Optimal dilutions are dependent on conditions and should be determined by the user.

Restrictions: For Research Use only

Handling

Concentration: 1.0 mg/mL

Buffer: PBS (without Mg²⁺ and Ca²⁺), pH 7.4, 150 mM NaCl, 0.02 % Sodium Azide and 50 % Glycerol.

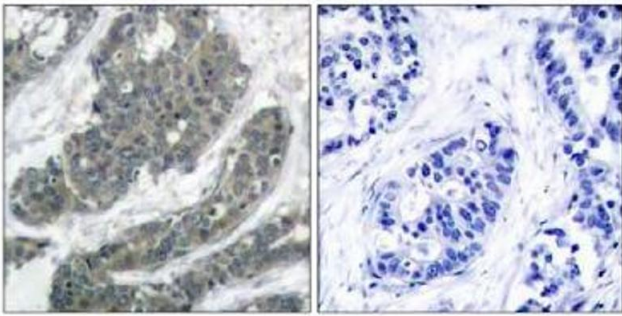
Preservative: Sodium azide

Precaution of Use: This product contains sodium azide: a POISONOUS AND HAZARDOUS SUBSTANCE which should be handled by trained staff only.

Handling Advice: Avoid repeated freezing and thawing.

Storage: -20 °C

Storage Comment: Store the antibody (in aliquots) at -20 °C.



Peptide - +

Image 1.

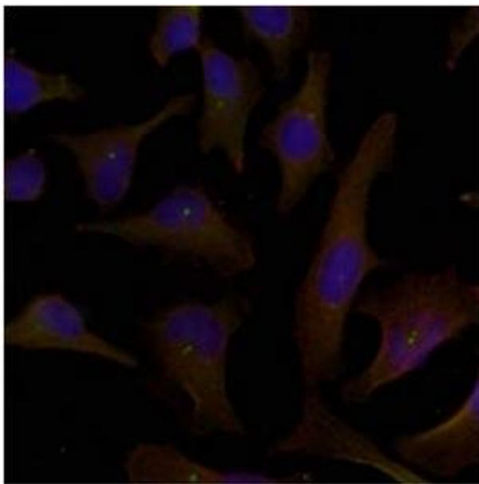


Image 2.

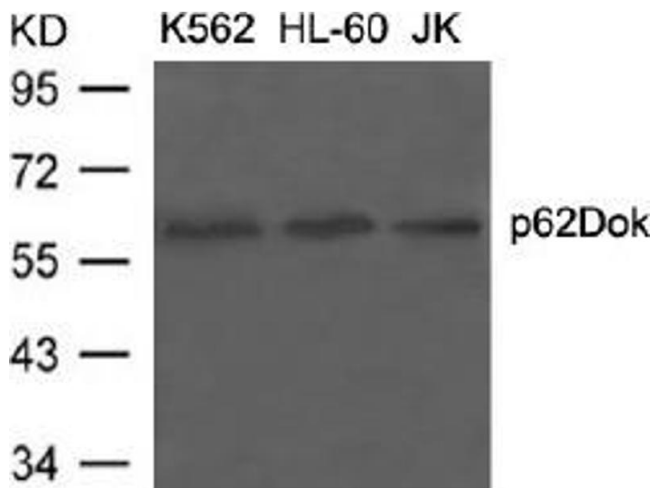


Image 3.