

Datasheet for ABIN197546
anti-GAP43 antibody (Ser41)



[Go to Product page](#)

3 Images

Overview

| | |
|----------------------|---|
| Quantity: | 0.1 mL |
| Target: | GAP43 |
| Binding Specificity: | Ser41 |
| Reactivity: | Human, Rat, Mouse |
| Host: | Rabbit |
| Clonality: | Polyclonal |
| Conjugate: | This GAP43 antibody is un-conjugated |
| Application: | Western Blotting (WB), Immunofluorescence (IF), Immunohistochemistry (Paraffin-embedded Sections) (IHC (p)) |

Product Details

| | |
|---------------|---|
| Immunogen: | The antiserum was produced against synthesized non-phosphopeptide derived from human GAP43 around the phosphorylation site of serine 41 (Q-A-Sp-F-R). |
| Specificity: | This antibody detects endogenous levels of total GAP43 protein. |
| Purification: | Immunoaffinity Chromatography using epitope-specific immunogen. |

Target Details

| | |
|-------------------|--|
| Target: | GAP43 |
| Alternative Name: | GAP43 (GAP43 Products) |
| Background: | GAP43 is expressed by developing and regenerating neurons, and to a lesser extent, reactive glial cells. It is used widely to specifically label injured neurons and to score neuronal |

Target Details

regeneration. GAP43 is also a neuronal growth cone protein thought to be involved in pathfinding. Synonyms: Axonal membrane protein GAP-43, Growth-associated protein 43, Neural phosphoprotein B-50, Neuromodulin, PP46

Gene ID: 2596

NCBI Accession: [NP_002036](#)

UniProt: [P17677](#)

Application Details

Application Notes: Western blot: 1/500 approx. 1/1000. Immunofluorescence: 1/100 approx. 1/200.
Immunohistochemistry on Paraffin-Embedded Sections: 1/50-1/100.
Other applications not tested.
Optimal dilutions are dependent on conditions and should be determined by the user.

Restrictions: For Research Use only

Handling

Concentration: 1.0 mg/mL

Buffer: PBS (without Mg²⁺ and Ca²⁺), pH 7.4, 150 mM NaCl, 0.02 % Sodium Azide and 50 % Glycerol.

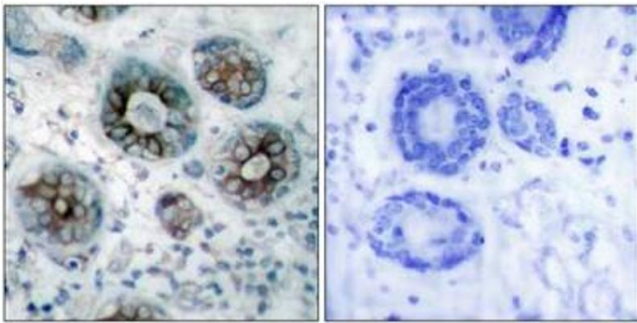
Preservative: Sodium azide

Precaution of Use: This product contains sodium azide: a POISONOUS AND HAZARDOUS SUBSTANCE which should be handled by trained staff only.

Handling Advice: Avoid repeated freezing and thawing.

Storage: -20 °C

Storage Comment: Store the antibody (in aliquots) at -20 °C.



Peptide - +

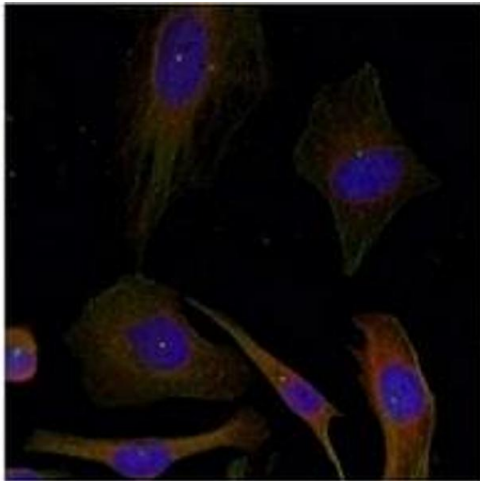
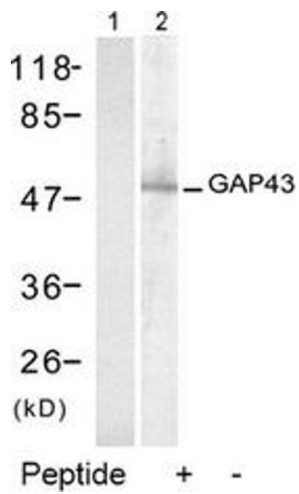


Image 1.

Image 2.

Image 3.