

Datasheet for ABIN197560  
**anti-MARCKS antibody (Ser158)**



[Go to Product page](#)

2 Images

## Overview

Quantity:	0.1 mL
Target:	MARCKS
Binding Specificity:	Ser158
Reactivity:	Human, Mouse, Rat
Host:	Rabbit
Clonality:	Polyclonal
Conjugate:	This MARCKS antibody is un-conjugated
Application:	Western Blotting (WB), Immunofluorescence (IF)

## Product Details

Immunogen:	The antiserum was produced against synthesized non-phosphopeptide derived from human MARCKS around the phosphorylation site of serine 158 (R-F-Sp-F-K).
Specificity:	This antibody detects endogenous levels of total MARCKS protein.
Purification:	Immunoaffinity Chromatography using epitope-specific immunogen.

## Target Details

Target:	MARCKS
Alternative Name:	MARCKS ( <a href="#">MARCKS Products</a> )
Background:	MARCKS, (Myristoylated Alanine-Rich C Kinase Substrate), is a member of a family of calmodulin binding proteins and is a major substrate for phosphorylation by protein kinase C (PKC). The phosphorylation of Ser152/156 can be used as a measure of PKC activation.

## Target Details

---

Phosphorylation of Ser152/156 modulates the binding of MARCKS to calmodulin.Synonyms:  
MACS, Myristoylated alanine-rich C-kinase substrate, PRKCSL

Gene ID: 4082

NCBI Accession: [NP\\_002347](#)

UniProt: [P29966](#)

## Application Details

---

Application Notes: Western blot: 1/500approx. 1/1000. Immunofluorescence: 1/100approx. 1/200.  
Other applications not tested.  
Optimal dilutions are dependent on conditions and should be determined by the user.

Restrictions: For Research Use only

## Handling

---

Concentration: 1.0 mg/mL

Buffer: PBS (without Mg<sup>2+</sup> and Ca<sup>2+</sup>), pH 7.4, 150 mM NaCl, 0.02 % Sodium Azide and 50 % Glycerol.

Preservative: Sodium azide

Precaution of Use: This product contains sodium azide: a POISONOUS AND HAZARDOUS SUBSTANCE which should be handled by trained staff only.

Handling Advice: Avoid repeated freezing and thawing.

Storage: -20 °C

Storage Comment: Store the antibody (in aliquots) at -20 °C.

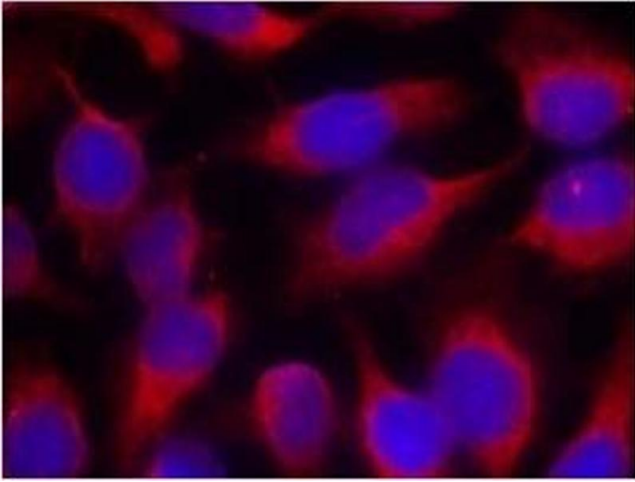


Image 1.

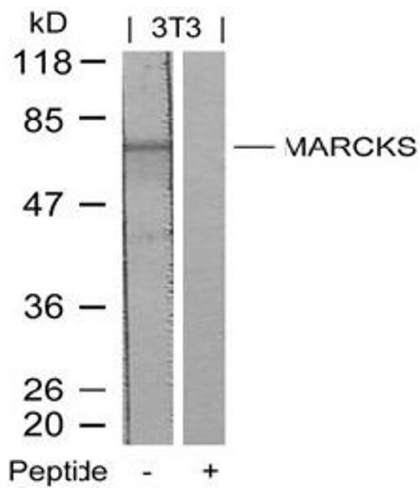


Image 2.