

Datasheet for ABIN197592
anti-SHP1 antibody (Tyr536)

3 Images



[Go to Product page](#)

Overview

Quantity:	0.1 mL
Target:	SHP1 (PTPN6)
Binding Specificity:	Tyr536
Reactivity:	Human, Mouse, Rat
Host:	Rabbit
Clonality:	Polyclonal
Conjugate:	This SHP1 antibody is un-conjugated
Application:	Western Blotting (WB), Immunofluorescence (IF), Immunohistochemistry (Paraffin-embedded Sections) (IHC (p))

Product Details

Immunogen:	The antiserum was produced against synthesized non-phosphopeptide derived from human SHP-1 around the phosphorylation site of tyrosine 536 (S-E-Yp-G-N).
Specificity:	This antibody detects endogenous levels of total PTPN6/SHP-1 protein.
Purification:	Immunoaffinity Chromatography using epitope-specific immunogen.

Target Details

Target:	SHP1 (PTPN6)
Alternative Name:	PTPN6 (PTPN6 Products)
Background:	SHP1 is a member of the non receptor protein tyrosine phosphatase subfamily. The PTP family comprises of at least 37 proteins, characterized by a catalytic phosphatase domain of

Target Details

approximately 240 amino acids, and includes both transmembrane and cytosolic enzymes. PTP1B is cytosolic. The PTPs have high substrate specificity for phosphotyrosyl proteins, at the primary sequence level sharing little similarity with the protein serine phosphatases, protein threonine phosphatases, or the acid and alkaline phosphatases. SHP1 is implicated in the control of tyrosine kinase signalling pathways in cellular proliferation, with a potential role in cancer. Synonyms: HCP, Hematopoietic cell protein-tyrosine phosphatase, PTP-1C, PTP1C, PTPN-6, Protein-tyrosine phosphatase 1C, Protein-tyrosine phosphatase SHP-1, SH-PTP1, Tyrosine-protein phosphatase non-receptor type 6

Gene ID:	5777
NCBI Accession:	NP_002822
UniProt:	P29350
Pathways:	JAK-STAT Signaling , TCR Signaling , TLR Signaling , Nuclear Receptor Transcription Pathway , Positive Regulation of Peptide Hormone Secretion , Steroid Hormone Mediated Signaling Pathway , Response to Growth Hormone Stimulus , Regulation of Leukocyte Mediated Immunity , CXCR4-mediated Signaling Events , Signaling Events mediated by VEGFR1 and VEGFR2 , BCR Signaling

Application Details

Application Notes:	Western blot: 1/500approx. 1/1000. Immunofluorescence: 1/100approx. 1/200. Immunohistochemistry on Paraffin-Embedded Sections: 1/50approx. 1/100. Other applications not tested. Optimal dilutions are dependent on conditions and should be determined by the user.
Restrictions:	For Research Use only

Handling

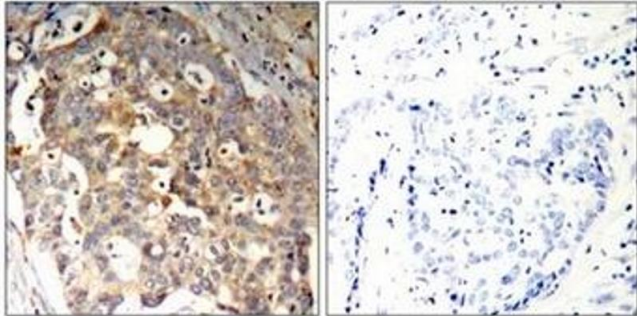
Concentration:	1.0 mg/mL
Buffer:	PBS (without Mg2+ and Ca2+), pH 7.4, 150 mM NaCl, 0.02 % Sodium Azide and 50 % Glycerol.
Preservative:	Sodium azide
Precaution of Use:	This product contains sodium azide: a POISONOUS AND HAZARDOUS SUBSTANCE which should be handled by trained staff only.
Handling Advice:	Avoid repeated freezing and thawing.

Handling

Storage: -20 °C

Storage Comment: Store the antibody (in aliquots) at -20 °C.

Images



Peptide	-	+
---------	---	---

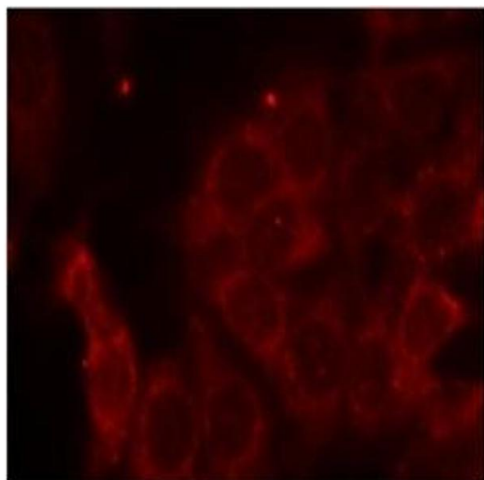
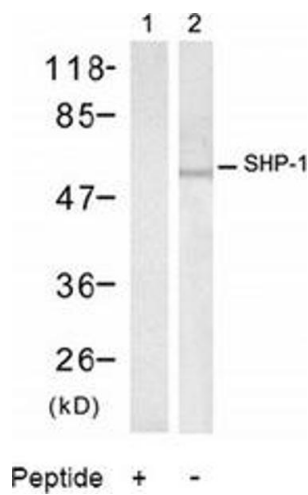


Image 1.

Image 2.

Image 3.