



[Go to Product page](#)

Datasheet for ABIN197598

anti-Niban antibody (AA 908-920)

2 Images

Overview

Quantity:	0.1 mL
Target:	Niban (FAM129A)
Binding Specificity:	AA 908-920
Reactivity:	Human
Host:	Rabbit
Clonality:	Polyclonal
Conjugate:	This Niban antibody is un-conjugated
Application:	Western Blotting (WB), Immunofluorescence (IF)

Product Details

Immunogen:	The antiserum was produced against a synthesized peptide Corresponding to the 908-920 amino-acid sequence from human Niban protein.
Sequence:	KDDVKEGEGG QES
Specificity:	This antibody detects endogenous levels of total Niban protein.
Purification:	Immunoaffinity Chromatography using epitope-specific immunogen.

Target Details

Target:	Niban (FAM129A)
Alternative Name:	Niban (FAM129A Products)
Background:	FAM129A belongs to the Niban family of proteins, and is expressed in renal carcinoma cells,

Target Details

but not in normal kidneys.Synonyms: C1orf24, Cell growth-inhibiting gene 39 protein, FAM129A, GIG39, NIBAN, Protein FAM129A

Gene ID: 116496

NCBI Accession: [NP_443198](#)

UniProt: [Q9BZQ8](#)

Application Details

Application Notes: Western Blot: 1/500approx. 1/1000. Immunofluorescence: 1/100approx. 1/200.
Other applications not tested.
Optimal dilutions are dependent on conditions and should be determined by the user.

Restrictions: For Research Use only

Handling

Concentration: 1.0 mg/mL

Buffer: PBS (without Mg²⁺ and Ca²⁺), pH 7.4, 150 mM NaCl, 0.02 % Sodium Azide and 50 % Glycerol.

Preservative: Sodium azide

Precaution of Use: This product contains sodium azide: a POISONOUS AND HAZARDOUS SUBSTANCE which should be handled by trained staff only.

Handling Advice: Avoid repeated freezing and thawing.

Storage: -20 °C

Storage Comment: Store the antibody (in aliquots) at -20 °C.

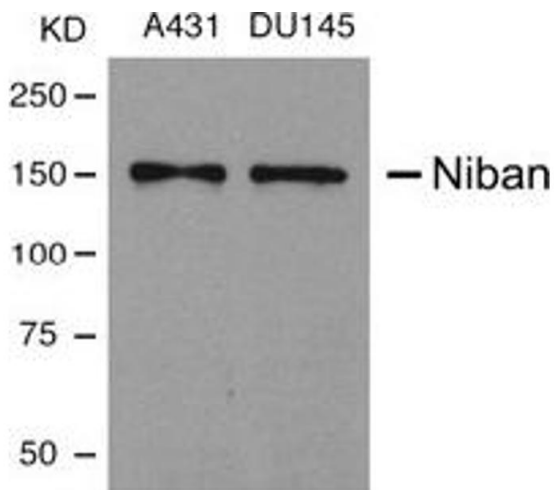


Image 1.

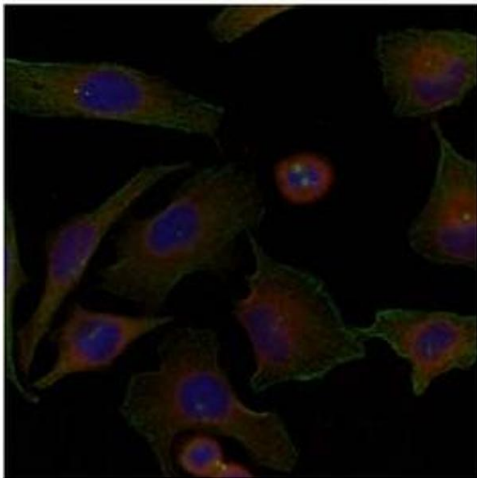


Image 2.