



Datasheet for ABIN197620

anti-SRCR antibody



[Go to Product page](#)

1 Image

Overview

Quantity:	0.1 mg
Target:	SRCR (LAP1)
Reactivity:	Geodia cydonium
Host:	Mouse
Clonality:	Monoclonal
Conjugate:	This SRCR antibody is un-conjugated
Application:	Immunoprecipitation (IP), Western Blotting (WB), Enzyme Immunoassay (EIA), Immunohistochemistry (Frozen Sections) (IHC (fro))

Product Details

Immunogen:	Recombinant SRCR (scavenger receptor cystein rich-domain) from Geodia cydonium
Clone:	5F10
Isotype:	IgM
Characteristics:	Synonyms: Scavenger Receptor Cystein rich-Domain, Aggregation receptor
Purification:	Protein G chromatography

Target Details

Target:	SRCR (LAP1)
Alternative Name:	SRCR (LAP1 Products)
Background:	Synonyms: Aggregation receptor, Scavenger Receptor Cystein rich-Domain

Target Details

UniProt: [O96943](#)

Application Details

Application Notes: ELISA. Western blot. Immunoprecipitation. Immunohistochemistry.
Other applications not tested.
Optimal dilutions are dependent on conditions and should be determined by the user.

Restrictions: For Research Use only

Handling

Reconstitution: Restore in aqua bidest to 1 mg/mL.

Buffer: 50 mM TRIS pH 7,4

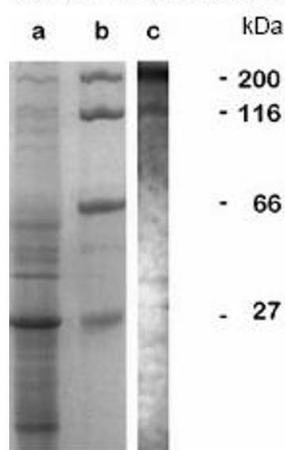
Storage: 4 °C/-20 °C

Storage Comment: Store lyophilized at 2 - 8 °C and reconstituted at -20 °C. Avoid repeated freezing and thawing.
Shelf life: One year from despatch.

Expiry Date: 12 months

Images

SDS-PAGE and Western blot:



Western Blotting

Image 1.