



[Go to Product page](#)

Datasheet for ABIN1976767
anti-Arhgef9 antibody (AA 274-303)

1 Image

Overview

Quantity:	200 µL
Target:	Arhgef9
Binding Specificity:	AA 274-303
Reactivity:	Human, Rat
Host:	Rabbit
Clonality:	Polyclonal
Conjugate:	This Arhgef9 antibody is un-conjugated
Application:	Immunohistochemistry (IHC), Western Blotting (WB), Immunohistochemistry (Paraffin-embedded Sections) (IHC (p))

Product Details

Brand:	IHC-plus™
Specificity:	This Arhgef9 antibody is generated from rabbits immunized with a KLH conjugated synthetic peptide between 274-303 amino acids from the Central region of human Arhgef9.
Purification:	Protein A purified

Target Details

Target:	Arhgef9
Alternative Name:	ARHGEF9 (Arhgef9 Products)
Background:	Name/Gene ID: ARHGEF9

Target Details

Synonyms: ARHGEF9, ARHDH9, EIEE8, HPEM-2, KIAA0424, PEM-2 homolog, PEM2, COLLYBISTIN, HPEM-2 collybistin, PEM-2

Gene ID: 23229

UniProt: [O43307](#)

Pathways: [Neurotrophin Signaling Pathway](#)

Application Details

Application Notes: Approved: IHC, IHC-P (10 µg/mL), WB (1:1000)

Usage: Please note that although the immunogenic sequence for this antibody is taken from rat, all testing has been performed on human samples. The antibody is expected to detect the rat protein since rat is the immunogenic source, but this has not been confirmed experimentally at this time.

Comment: Target Species of Antibody: Rat

Restrictions: For Research Use only

Handling

Format: Liquid

Concentration: Lot specific

Buffer: PBS, 0.09 % sodium azide

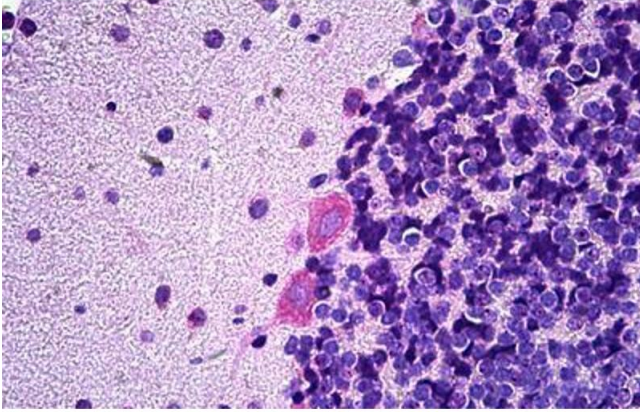
Preservative: Sodium azide

Precaution of Use: This product contains Sodium azide: a POISONOUS AND HAZARDOUS SUBSTANCE which should be handled by trained staff only.

Handling Advice: avoid freeze thaw cycles.

Storage: 4 °C, -20 °C

Storage Comment: Short term 4°C, long term aliquot and store at -20°C, avoid freeze-thaw cycles.



Immunohistochemistry (Formalin-fixed Paraffin-embedded Sections)

Image 1. Rat Brain, Purkinje: Formalin-Fixed, Paraffin-Embedded (FFPE)