



[Go to Product page](#)

Datasheet for ABIN1976792  
**anti-ARL10 antibody (AA 150-176)**

1 Image

### Overview

Quantity:	200 µL
Target:	ARL10
Binding Specificity:	AA 150-176
Reactivity:	Human
Host:	Rabbit
Clonality:	Polyclonal
Conjugate:	This ARL10 antibody is un-conjugated
Application:	Western Blotting (WB), Immunohistochemistry (Paraffin-embedded Sections) (IHC (p)), Immunohistochemistry (IHC)

### Product Details

Brand:	IHC-plus™
Specificity:	This ARL10 antibody is generated from rabbits immunized with a KLH conjugated synthetic peptide between 150-176 amino acids from the Central region of human ARL10.
Purification:	Protein A purified

### Target Details

Target:	ARL10
Alternative Name:	ARL10 ( <a href="#">ARL10 Products</a> )
Background:	Name/Gene ID: ARL10

## Target Details

Synonyms: ARL10, ARL10A

Gene ID: 285598

## Application Details

Application Notes: Approved: IHC, IHC-P (1:100), WB (1:1000)

Comment: Target Species of Antibody: Human

Restrictions: For Research Use only

## Handling

Format: Liquid

Concentration: Lot specific

Buffer: PBS, 0.09 % sodium azide

Preservative: Sodium azide

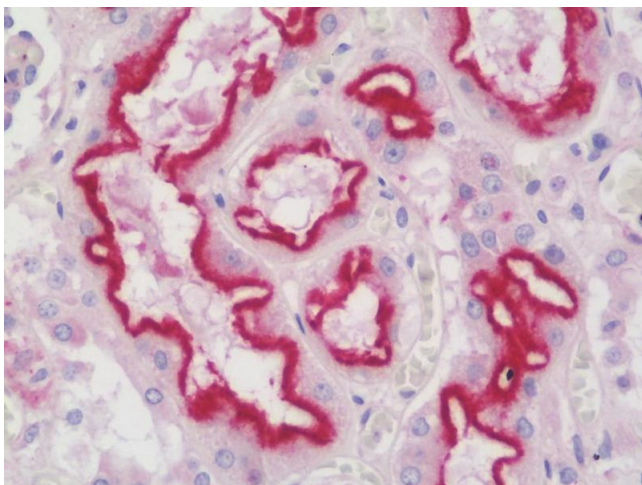
Precaution of Use: This product contains Sodium azide: a POISONOUS AND HAZARDOUS SUBSTANCE which should be handled by trained staff only.

Storage: 4 °C, -20 °C

Storage Comment: Maintain refrigerated at 2-8°C for up to 6 months. For long term storage store at -20°C.

Expiry Date: 6 months

## Images



### Immunohistochemistry

**Image 1.** Anti-ARL10 antibody IHC staining of human kidney. Immunohistochemistry of formalin-fixed, paraffin-embedded tissue after heat-induced antigen retrieval. Antibody dilution 1:100.