

Datasheet for ABIN1977601

anti-Cadherin-16 antibody (AA 796-824)[Go to Product page](#)**1** Image

Overview

Quantity:	200 µL
Target:	Cadherin-16 (CDH16)
Binding Specificity:	AA 796-824
Reactivity:	Human
Host:	Rabbit
Clonality:	Polyclonal
Conjugate:	This Cadherin-16 antibody is un-conjugated
Application:	Western Blotting (WB), Immunohistochemistry (IHC), Immunohistochemistry (Paraffin-embedded Sections) (IHC (p))

Product Details

Brand:	IHC-plus™
Specificity:	This CDH16 antibody is generated from rabbits immunized with a KLH conjugated synthetic peptide between 796-824 amino acids from the C-terminal region of human CDH16.
Purification:	Protein A purified

Target Details

Target:	Cadherin-16 (CDH16)
Alternative Name:	CDH16 / Cadherin 16 (CDH16 Products)
Background:	Name/Gene ID: CDH16 Family: Cadherin

Target Details

Synonyms: CDH16, Cadherin 16, KSP-cadherin, Cadherin 16, Cadherin-16, Kidney-specific cadherin, KSP-cadherin

Gene ID: 1014

Application Details

Application Notes: Approved: IHC, IHC-P (1:100), WB (1:1000)

Comment: Target Species of Antibody: Human

Restrictions: For Research Use only

Handling

Format: Liquid

Concentration: Lot specific

Buffer: PBS, 0.09 % sodium azide

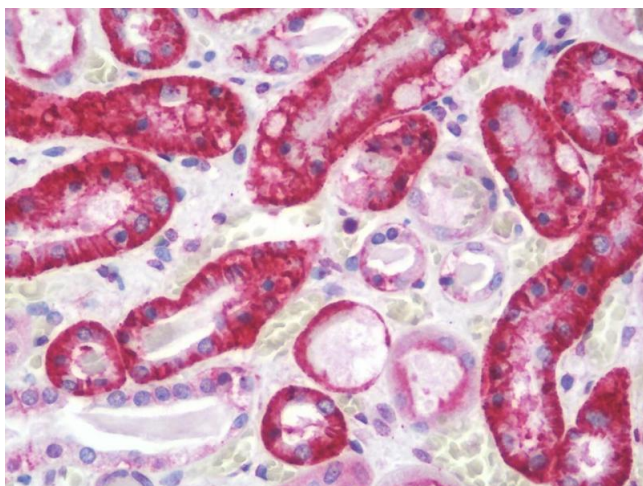
Preservative: Sodium azide

Precaution of Use: This product contains Sodium azide: a POISONOUS AND HAZARDOUS SUBSTANCE which should be handled by trained staff only.

Storage: 4 °C,-20 °C

Storage Comment: Maintain refrigerated at 2-8°C for up to 6 months. For long term storage store at -20°C.

Expiry Date: 6 months



Immunohistochemistry

Image 1. Anti-CDH16 / Cadherin 16 antibody IHC staining of human kidney. Immunohistochemistry of formalin-fixed, paraffin-embedded tissue after heat-induced antigen retrieval. Antibody dilution 1:100.