

Datasheet for ABIN1977822  
**anti-CIDEA antibody (AA 181-209)**[Go to Product page](#)

## 1 Image

## Overview

Quantity:	200 µL
Target:	CIDEA
Binding Specificity:	AA 181-209
Reactivity:	Human
Host:	Rabbit
Clonality:	Polyclonal
Conjugate:	This CIDEA antibody is un-conjugated
Application:	Western Blotting (WB), Immunohistochemistry (IHC), Immunohistochemistry (Paraffin-embedded Sections) (IHC (p))

## Product Details

Brand:	IHC-plus™
Specificity:	This CIDEA antibody is generated from rabbits immunized with a KLH conjugated synthetic peptide between 181-209 amino acids from the C-terminal region of human CIDEA.
Purification:	Protein A purified

## Target Details

Target:	CIDEA
Alternative Name:	CIDEA / CIDE-A ( <a href="#">CIDEA Products</a> )
Background:	Name/Gene ID: CIDEA Family: Apoptosis

## Target Details

Synonyms: CIDEA, CIDE-A, Cell death activator CIDE-A

Gene ID: 1149

## Application Details

Application Notes: Approved: IHC, IHC-P (1:100), WB (1:1000)

Comment: Target Species of Antibody: Human

Restrictions: For Research Use only

## Handling

Format: Liquid

Concentration: Lot specific

Buffer: PBS, 0.09 % sodium azide

Preservative: Sodium azide

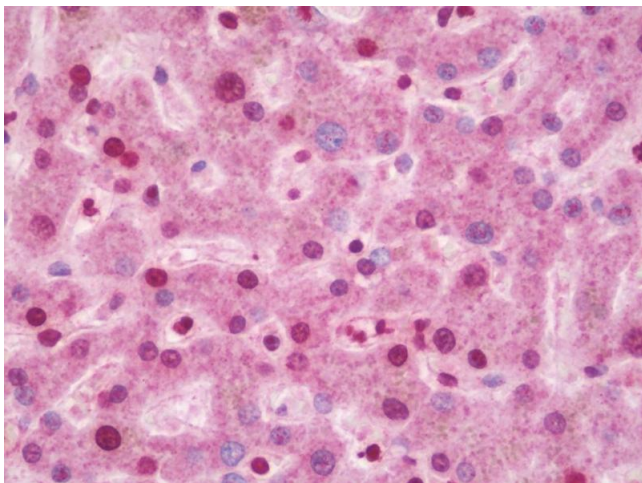
Precaution of Use: This product contains Sodium azide: a POISONOUS AND HAZARDOUS SUBSTANCE which should be handled by trained staff only.

Storage: 4 °C, -20 °C

Storage Comment: Maintain refrigerated at 2-8°C for up to 6 months. For long term storage store at -20°C.

Expiry Date: 6 months

## Images



### Immunohistochemistry

**Image 1.** Anti-CIDEA / CIDE-A antibody IHC staining of human liver. Immunohistochemistry of formalin-fixed, paraffin-embedded tissue after heat-induced antigen retrieval. Antibody dilution 1:100.