



Datasheet for ABIN1977856
anti-Claudin 16 antibody (AA 6-33)



[Go to Product page](#)

1 Image

Overview

Quantity:	200 µL
Target:	Claudin 16 (CLDN16)
Binding Specificity:	AA 6-33
Reactivity:	Human
Host:	Rabbit
Clonality:	Polyclonal
Conjugate:	This Claudin 16 antibody is un-conjugated
Application:	Western Blotting (WB), Flow Cytometry (FACS), Immunohistochemistry (IHC), Immunohistochemistry (Paraffin-embedded Sections) (IHC (p))

Product Details

Brand:	IHC-plus™
Specificity:	This CLDN16 antibody is generated from rabbits immunized with a KLH conjugated synthetic peptide between 6-33 amino acids from the N-terminal region of human CLDN16.
Purification:	Protein A purified

Target Details

Target:	Claudin 16 (CLDN16)
Alternative Name:	CLDN16 / Claudin 16 (CLDN16 Products)
Background:	Name/Gene ID: CLDN16 Family: Claudin

Target Details

Synonyms: CLDN16, Claudin 16, Claudin-16, Paracellin-1, PCLN1, PCLN-1, HOMG3

Gene ID: 10686

Pathways: [Hepatitis C](#)

Application Details

Application Notes: Approved: Flo (1:10 - 1:50), IHC, IHC-P (1:100), WB (1:1000)

Comment: Target Species of Antibody: Human

Restrictions: For Research Use only

Handling

Format: Liquid

Concentration: Lot specific

Buffer: PBS, 0.09 % sodium azide

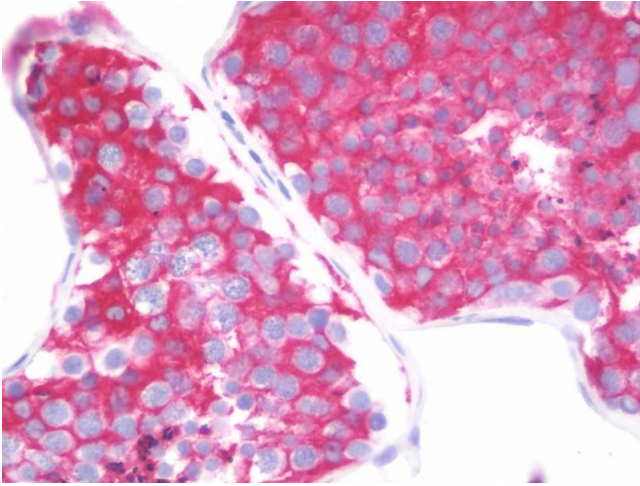
Preservative: Sodium azide

Precaution of Use: This product contains Sodium azide: a POISONOUS AND HAZARDOUS SUBSTANCE which should be handled by trained staff only.

Storage: 4 °C, -20 °C

Storage Comment: Maintain refrigerated at 2-8°C for up to 6 months. For long term storage store at -20°C.

Expiry Date: 6 months



Immunohistochemistry

Image 1. Anti-CLDN16 / Claudin 16 antibody IHC staining of human testis. Immunohistochemistry of formalin-fixed, paraffin-embedded tissue after heat-induced antigen retrieval. Antibody dilution 1:100.