



[Go to Product page](#)

Datasheet for ABIN1977887
anti-CLUH antibody (AA 1259-1309)

1 Image

Overview

Quantity:	100 µL
Target:	CLUH
Binding Specificity:	AA 1259-1309
Reactivity:	Human
Host:	Rabbit
Clonality:	Polyclonal
Application:	Western Blotting (WB), Immunohistochemistry (IHC), Immunoprecipitation (IP), Immunohistochemistry (Paraffin-embedded Sections) (IHC (p))

Product Details

Isotype:	IgG
Specificity:	Region between residue 1259 and 1309 of human putative eukaryotic translation initiation factor 3 subunit using the numbering given in entry NP_056044.3 (GeneID 23277).
Purification:	Immunoaffinity purified

Target Details

Target:	CLUH
Alternative Name:	CLU1 / KIAA0664 (CLUH Products)
Background:	Name/Gene ID: CLUH Synonyms: CLUH, CLU1, KIAA0664

Target Details

Gene ID: 23277

Application Details

Application Notes: Approved: IHC, IHC-P (1:50), IP (2 - 5 µg/mg lysate), WB (1:2000 - 1:10000)

Comment: Target Species of Antibody: Human

Restrictions: For Research Use only

Handling

Format: Liquid

Concentration: Lot specific

Buffer: Tris-buffered saline, 0.1 % BSA, 0.09 % sodium azide.

Preservative: Sodium azide

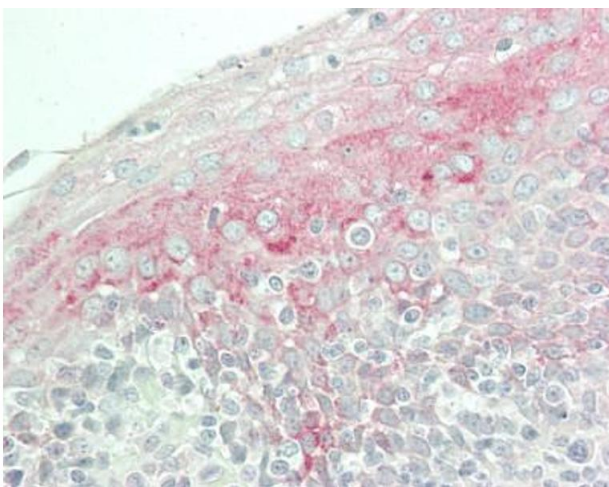
Precaution of Use: This product contains Sodium azide: a POISONOUS AND HAZARDOUS SUBSTANCE which should be handled by trained staff only.

Storage: 4 °C

Storage Comment: Store at 2-8°C for up to 1 year.

Expiry Date: 12 months

Images



Immunohistochemistry (Paraffin-embedded Sections)

Image 1. Human Tonsil: Formalin-Fixed, Paraffin-Embedded (FFPE)