



Datasheet for ABIN1978795
anti-EMP2 antibody (AA 100-129)



[Go to Product page](#)

2 Images

Overview

Quantity:	200 µL
Target:	EMP2
Binding Specificity:	AA 100-129
Reactivity:	Human, Mouse
Host:	Rabbit
Clonality:	Polyclonal
Conjugate:	This EMP2 antibody is un-conjugated
Application:	Immunohistochemistry (IHC), Western Blotting (WB), Immunohistochemistry (Paraffin-embedded Sections) (IHC (p))

Product Details

Brand:	IHC-plus™
Specificity:	This EMP2 antibody is generated from rabbits immunized with a KLH conjugated synthetic peptide between 100-129 amino acids from the C-terminal region of human EMP2.
Purification:	Protein A purified

Target Details

Target:	EMP2
Alternative Name:	EMP2 (EMP2 Products)
Background:	Name/Gene ID: EMP2

Target Details

Synonyms: EMP2, EMP-2, Epithelial membrane protein 2, XMP, Protein XMP

Gene ID: 2013

UniProt: [P54851](#)

Application Details

Application Notes: Approved: IHC, IHC-P (10 µg/mL), WB (1:1000)

Comment: Target Species of Antibody: Human

Restrictions: For Research Use only

Handling

Format: Liquid

Concentration: Lot specific

Buffer: PBS, 0.09 % sodium azide

Preservative: Sodium azide

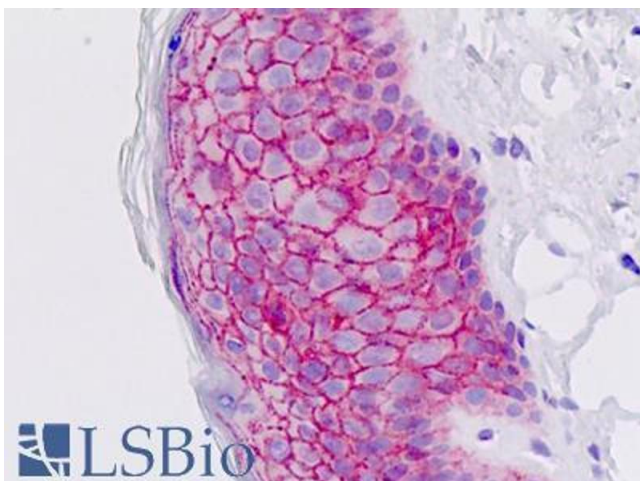
Precaution of Use: This product contains Sodium azide: a POISONOUS AND HAZARDOUS SUBSTANCE which should be handled by trained staff only.

Storage: 4 °C, -20 °C

Storage Comment: Maintain refrigerated at 2-8°C for up to 6 months. For long term storage store at -20°C.

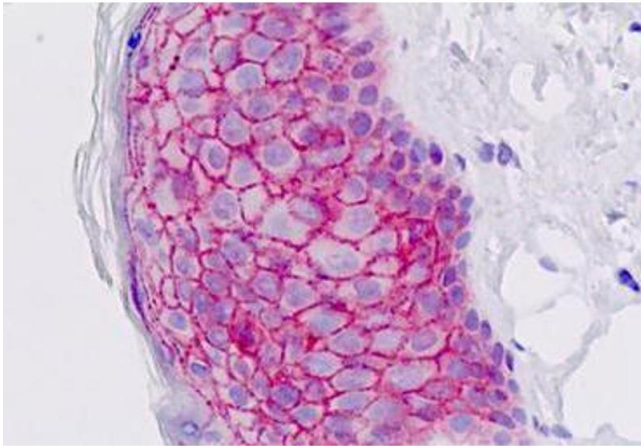
Expiry Date: 6 months

Images



Immunohistochemistry

Image 1. Human Skin, Epidermis: Formalin-Fixed, Paraffin-Embedded (FFPE)



Immunohistochemistry

Image 2. Human Skin, Epidermis: Formalin-Fixed, Paraffin-Embedded (FFPE)