

Datasheet for ABIN1978857
anti-CKB antibody (AA 165-381)



[Go to Product page](#)

1 Image

Overview

Quantity:	100 µL
Target:	CKB
Binding Specificity:	AA 165-381
Reactivity:	Human, Mouse
Host:	Rabbit
Clonality:	Polyclonal
Application:	Western Blotting (WB), Immunohistochemistry (IHC), Immunocytochemistry (ICC), Immunohistochemistry (Paraffin-embedded Sections) (IHC (p))

Product Details

Brand:	IHC-plus™
Immunogen:	Recombinant fragment corresponding to a region within amino acids 165 and 381 of Creatine kinase (brain) (SwissProt P12277). Percent identity by BLAST analysis: Human (100%), Chicken, Rat (97%), Pig, Rabbit, Bovine (96%), Xenopus (88%). Type of Immunogen: Recombinant protein
Specificity:	Human CKB / CKBB
Purification:	Immunoaffinity purified

Target Details

Target:	CKB
---------	-----

Target Details

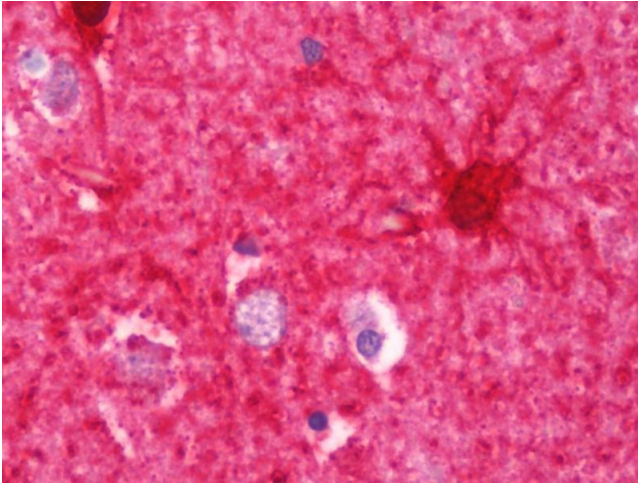
Alternative Name:	CKB / Creatine Kinase BB (CKB Products)
Background:	Name/Gene ID: CKB Synonyms: CKB, CKBB, Creatine kinase-B, Creatine kinase, b chain, B-CK, Creatine kinase B chain, Creatine kinase B-type, Creatine kinase, brain
Gene ID:	1152

Application Details

Application Notes:	Approved: ICC (1:100 - 1:1000), IHC, IHC-P (7.5 µg/mL), WB (1:1000 - 1:10000) Usage: IHC-paraffin: Suggested antigen retrieval using heat mediated 10 mM Citrate buffer (pH 6.0) or Tris-EDTA buffer (pH 8.0).
Comment:	Target Species of Antibody: Human
Restrictions:	For Research Use only

Handling

Format:	Liquid
Concentration:	Lot specific
Buffer:	0.1 M Tris-glycine, pH 7.0, 10 % glycerol, 0.01 % Thimerosal
Preservative:	Thimerosal (Merthiolate)
Precaution of Use:	This product contains Thimerosal (Merthiolate): a POISONOUS AND HAZARDOUS SUBSTANCE which should be handled by trained staff only.
Handling Advice:	Avoid multiple freeze-thaw cycles.
Storage:	-20 °C
Storage Comment:	Keep as concentrated solution. Aliquot and store at -20°C or below. Avoid multiple freeze-thaw cycles.



Immunohistochemistry

Image 1. Anti-CKB / Creatine Kinase BB antibody IHC staining of human brain, cortex. Immunohistochemistry of formalin-fixed, paraffin-embedded tissue after heat-induced antigen retrieval. Antibody concentration 7.5 ug/ml.