

Datasheet for ABIN1978858
anti-CLDN14 antibody (AA 177-239)



[Go to Product page](#)

1 Image

Overview

Quantity:	50 µL
Target:	CLDN14
Binding Specificity:	AA 177-239
Reactivity:	Human, Monkey
Host:	Rabbit
Clonality:	Polyclonal
Application:	Western Blotting (WB), Immunohistochemistry (IHC), Immunohistochemistry (Paraffin-embedded Sections) (IHC (p))

Product Details

Brand:	IHC-plus™
Immunogen:	Synthetic peptide corresponding to a region within amino acids 177 and 239 of Claudin 14 (SwissProt O95500). Percent identity by BLAST analysis: Human, Monkey (100%). Type of Immunogen: Synthetic peptide
Isotype:	IgG
Specificity:	Human Claudin 14
Purification:	Immunoaffinity purified

Target Details

Target:	CLDN14
---------	--------

Target Details

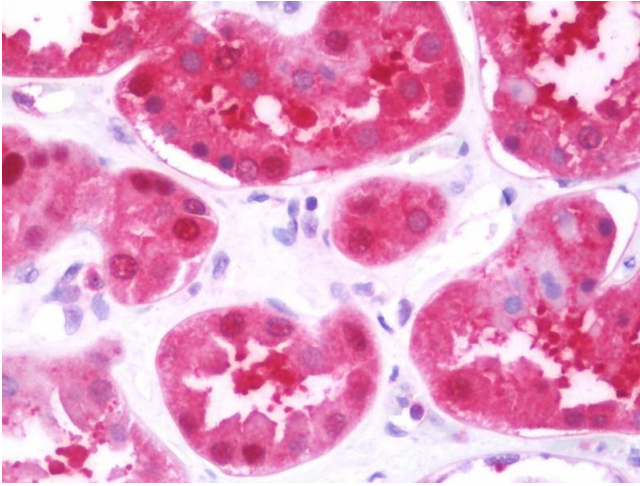
Alternative Name:	CLDN14 / Claudin 14 (CLDN14 Products)
Background:	Name/Gene ID: CLDN14 Family: Claudin Synonyms: CLDN14, Claudin 14, DFNB29, Claudin-14
Gene ID:	23562
Pathways:	Cell-Cell Junction Organization , Hepatitis C

Application Details

Application Notes:	Approved: IHC, IHC-P (7.5 µg/mL), WB (1:500 - 1:3000)
Comment:	Target Species of Antibody: Human
Restrictions:	For Research Use only

Handling

Format:	Liquid
Concentration:	Lot specific
Buffer:	PBS, pH 7.0, 40 % glycerol, 0.01 % Thimerosal
Preservative:	Thimerosal (Merthiolate)
Precaution of Use:	This product contains Thimerosal (Merthiolate): a POISONOUS AND HAZARDOUS SUBSTANCE which should be handled by trained staff only.
Handling Advice:	Avoid multiple freeze-thaw cycles.
Storage:	-20 °C
Storage Comment:	Keep as concentrated solution. Aliquot and store at -20°C or below. Avoid multiple freeze-thaw cycles.



Immunohistochemistry

Image 1. Anti-CLDN14 / Claudin 14 antibody IHC staining of human kidney. Immunohistochemistry of formalin-fixed, paraffin-embedded tissue after heat-induced antigen retrieval. Antibody concentration 7.5 ug/ml.