

Datasheet for ABIN1978938 anti-CH25H antibody (AA 190-239)



[Go to Product page](#)

2 Images

Overview

Quantity:	50 µg
Target:	CH25H
Binding Specificity:	AA 190-239
Reactivity:	Human, Monkey
Host:	Rabbit
Clonality:	Polyclonal
Application:	Western Blotting (WB), Immunohistochemistry (IHC), Immunohistochemistry (Paraffin-embedded Sections) (IHC (p))

Product Details

Brand:	IHC-plus™
Immunogen:	Synthetic peptide located between aa190-239 of human CH25H (O95992, NP_003947). Percent identity by BLAST analysis: Human, Chimpanzee, Gorilla, Orangutan, Gibbon, Monkey, Marmoset (100%), Galago, Mouse, Rat, Elephant, Panda, Dog, Bovine, Bat, Rabbit, Horse, Pig, Guinea pig, Platypus (92%), Turkey, Zebra finch, Chicken, Lizard, Salmon (85%), Xenopus (84%), Rice (83%), Pufferfish (81%). Type of Immunogen: Synthetic peptide
Specificity:	Human CH25H
Purification:	Immunoaffinity purified

Target Details

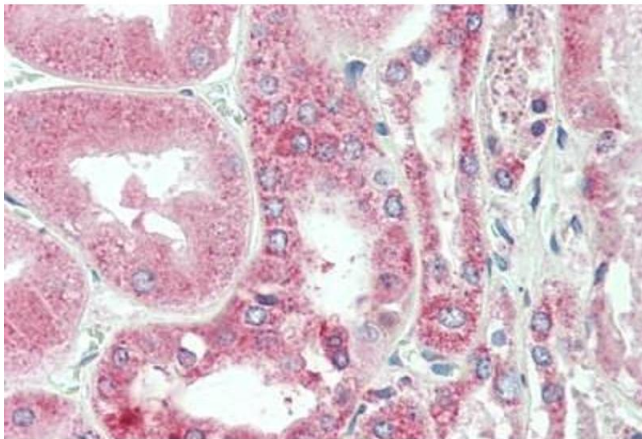
Target:	CH25H
Alternative Name:	C25H / CH25H (CH25H Products)
Background:	Name/Gene ID: CH25H Synonyms: CH25H, C25H, Cholesterol 25-hydroxylase, Cholesterol 25-monooxygenase, H250H
Gene ID:	9023
NCBI Accession:	NP_003947

Application Details

Application Notes:	Approved: IHC, IHC-P (10 µg/mL), WB (1 µg/mL)
Comment:	Target Species of Antibody: Human
Restrictions:	For Research Use only

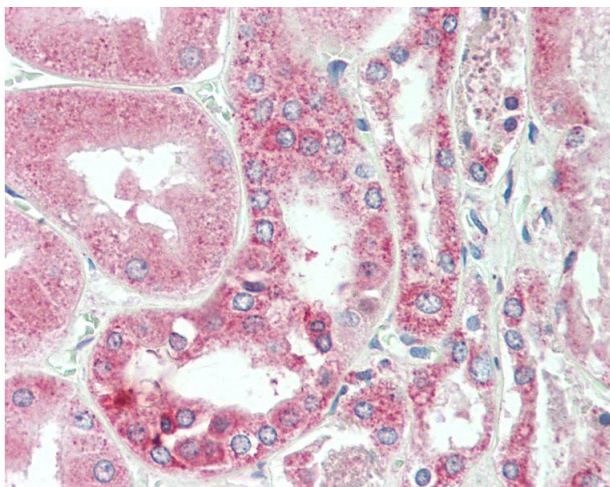
Handling

Format:	Lyophilized
Reconstitution:	Reconstitute with 50 µL sterile ddH ₂ O.
Concentration:	Lot specific
Buffer:	Lyophilized from PBS with 2 % sucrose
Handling Advice:	Avoid repeat freeze-thaw cycles.
Storage:	4 °C, -20 °C
Storage Comment:	Long term: -20°C, the use of 50% glycerol is recommended if storing aliquots in -20°C for long term use (up to 1 year) Short term (less than 1 week): 4°C. Avoid freeze-thaw cycles.



Immunohistochemistry

Image 1. Human Kidney: Formalin-Fixed, Paraffin-Embedded (FFPE)



Immunohistochemistry

Image 2. Anti-C25H / CH25H antibody IHC staining of human kidney. Immunohistochemistry of formalin-fixed, paraffin-embedded tissue after heat-induced antigen retrieval. Antibody concentration 10 ug/ml. This image was taken for the unconjugated form of this p ...