

Datasheet for ABIN1980405
anti-GATA1 antibody (AA 42-292)

3 Images

[Go to Product page](#)

Overview

Quantity:	100 µL
Target:	GATA1
Binding Specificity:	AA 42-292
Reactivity:	Rat
Host:	Rabbit
Clonality:	Polyclonal
Conjugate:	This GATA1 antibody is un-conjugated
Application:	Western Blotting (WB), Immunohistochemistry (IHC), Immunocytochemistry (ICC)

Product Details

Immunogen:	GATA1 (Asp42-Asn292)
Isotype:	IgG
Specificity:	The antibody is a rabbit polyclonal antibody raised against GATA1. It has been selected for its ability to recognize GATA1 in immunohistochemical staining and western blotting.
Purification:	Antigen-specific affinity chromatography

Target Details

Target:	GATA1
Alternative Name:	GATA Binding Protein 1 (GATA1) (GATA1 Products)
Background:	Alternative Names: ERYF1, GF1, NFE1, Globin Transcription Factor 1, Erythroid transcription

Target Details

factor, , NF-E1 DNA-binding protein

Pathways: [Cellular Response to Molecule of Bacterial Origin](#)

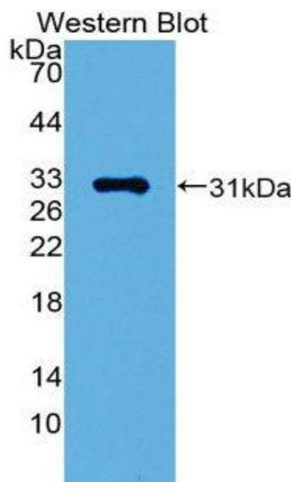
Application Details

Application Notes:	<ul style="list-style-type: none">Western blotting: 1:50-400 Immunocytochemistry in formalin fixed cells: 1:50-500 Immunohistochemistry in formalin fixed frozen section: 1:50-500 Immunohistochemistry in paraffin section: 1:10-100 Enzyme-linked Immunosorbent Assay: 1:100-1:5000 Optimal working dilutions must be determined by end user.
Comment:	The thermal stability is described by the loss rate. The loss rate was determined by accelerated thermal degradation test, that is, incubate the protein at 37°C for 48h, and no obvious degradation and precipitation were observed. The loss rate is less than 5% within the expiration date under appropriate storage condition.
Restrictions:	For Research Use only

Handling

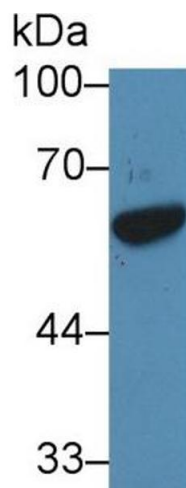
Format:	Liquid
Concentration:	Lot specific
Buffer:	PBS, pH 7.4, containing 0.02 % Sodium azide, 50 % glycerol.
Handling Advice:	Avoid repeated freeze-thaw cycles.
Expiry Date:	12 months

Images



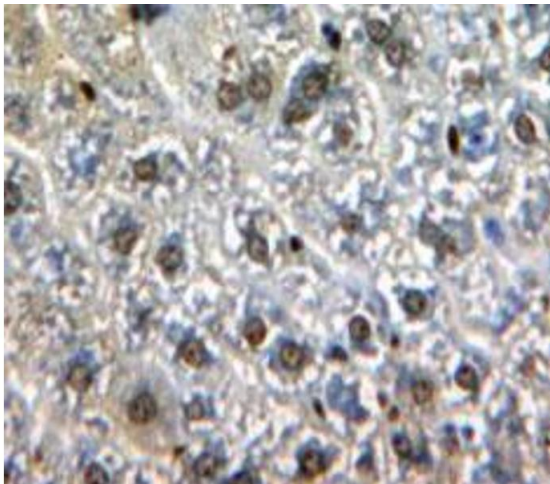
Western Blotting

Image 1.



Western Blotting

Image 2. Western Blot; Sample: Human HL60 cell lysate; Primary Ab: 5µg/ml Rabbit Anti-Rat GATA1 Antibody Second Ab: 0.2µg/mL HRP-Linked Caprine Anti-Rabbit IgG Polyclonal Antibody (Catalog: SAA544Rb19)



Immunohistochemistry

Image 3. Used in DAB staining on formalin fixed paraffin-embedded liver tissue