

Datasheet for ABIN1980410
anti-CD236/GYPC antibody (AA 1-128)[Go to Product page](#)

3 Images

Overview

Quantity:	100 µL
Target:	CD236/GYPC (GYPC)
Binding Specificity:	AA 1-128
Reactivity:	Human
Host:	Rabbit
Clonality:	Polyclonal
Conjugate:	This CD236/GYPC antibody is un-conjugated
Application:	Western Blotting (WB), Immunohistochemistry (IHC), Immunocytochemistry (ICC)

Product Details

Immunogen:	GYPC (Met1-Ile128)
Isotype:	IgG
Specificity:	The antibody is a rabbit polyclonal antibody raised against GYPC. It has been selected for its ability to recognize GYPC in immunohistochemical staining and western blotting.
Purification:	Antigen-specific affinity chromatography

Target Details

Target:	CD236/GYPC (GYPC)
Abstract:	GYPC Products
Target Type:	Viral Protein

Target Details

Background:	Alternative Names: CD236, CD236R, GYP-C, PAS-2, GPC, GYPD, Ge, Glycoprotein Beta, Glycoconnectin, Gerbich Blood Group, Glycophorin-D, Sialoglycoprotein D
-------------	---

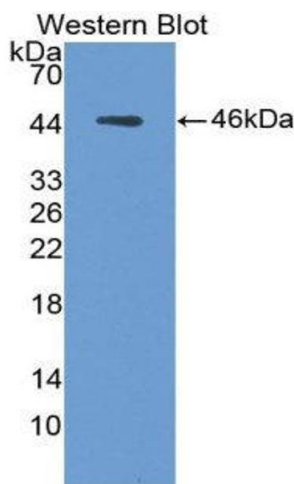
Application Details

Application Notes:	<ul style="list-style-type: none">Western blotting: 1:50-400 Immunocytochemistry in formalin fixed cells: 1:50-500 Immunohistochemistry in formalin fixed frozen section: 1:50-500 Immunohistochemistry in paraffin section: 1:10-100 Enzyme-linked Immunosorbent Assay: 1:100-1:5000 Optimal working dilutions must be determined by end user.
Comment:	The thermal stability is described by the loss rate. The loss rate was determined by accelerated thermal degradation test, that is, incubate the protein at 37°C for 48h, and no obvious degradation and precipitation were observed. The loss rate is less than 5% within the expiration date under appropriate storage condition.
Restrictions:	For Research Use only

Handling

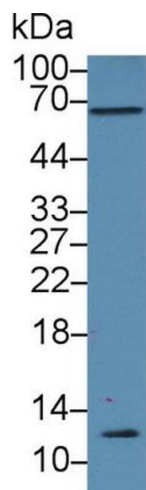
Format:	Liquid
Concentration:	Lot specific
Buffer:	PBS, pH 7.4, containing 0.02 % Sodium azide, 50 % glycerol.
Handling Advice:	Avoid repeated freeze-thaw cycles.
Expiry Date:	12 months

Images



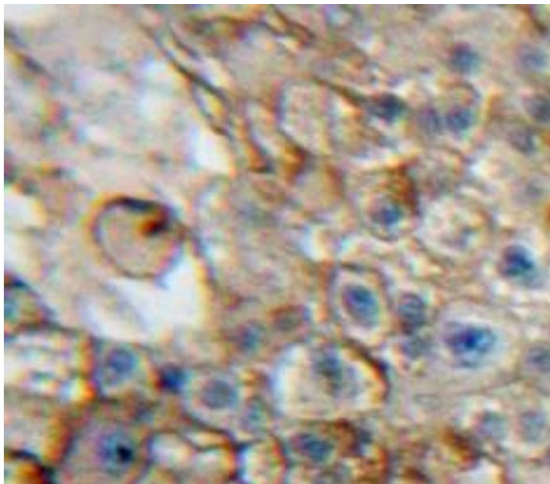
Western Blotting

Image 1.



Western Blotting

Image 2. Western Blot; Sample: Rat Testis lysate; Primary Ab: 3µg/ml Rabbit Anti-Human GYPC Antibody Second Ab: 0.2µg/mL HRP-Linked Caprine Anti-Rabbit IgG Polyclonal Antibody (Catalog: SAA544Rb19)



Immunohistochemistry

Image 3. Used in DAB staining on formalin fixed paraffin-embedded Liver tissue