

Datasheet for ABIN1980427
anti-HIST2H2BE antibody (AA 2-126)[Go to Product page](#)

3 Images

Overview

Quantity:	100 µL
Target:	HIST2H2BE
Binding Specificity:	AA 2-126
Reactivity:	Human
Host:	Rabbit
Clonality:	Polyclonal
Conjugate:	This HIST2H2BE antibody is un-conjugated
Application:	Western Blotting (WB), Immunohistochemistry (IHC), Immunocytochemistry (ICC)

Product Details

Immunogen:	HIST2H2BE (Pro2-Lys126)
Isotype:	IgG
Specificity:	The antibody is a rabbit polyclonal antibody raised against HIST2H2BE. It has been selected for its ability to recognize HIST2H2BE in immunohistochemical staining and western blotting.
Purification:	Antigen-specific affinity chromatography

Target Details

Target:	HIST2H2BE
Alternative Name:	Histone Cluster 2, H2be (HIST2H2BE) (HIST2H2BE Products)
Background:	Alternative Names: H2BFQ, H2B/q, H2B.1, H2B Histone Family Member Q

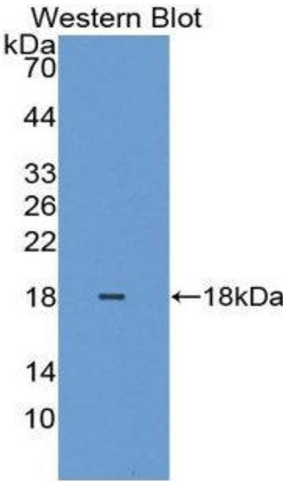
Application Details

Application Notes:	<ul style="list-style-type: none">Western blotting: 1:50-400 Immunocytochemistry in formalin fixed cells: 1:50-500 Immunohistochemistry in formalin fixed frozen section: 1:50-500 Immunohistochemistry in paraffin section: 1:10-100 Enzyme-linked Immunosorbent Assay: 1:100-1:5000 Optimal working dilutions must be determined by end user.
Comment:	The thermal stability is described by the loss rate. The loss rate was determined by accelerated thermal degradation test, that is, incubate the protein at 37°C for 48h, and no obvious degradation and precipitation were observed. The loss rate is less than 5% within the expiration date under appropriate storage condition.
Restrictions:	For Research Use only

Handling

Format:	Liquid
Concentration:	Lot specific
Buffer:	PBS, pH 7.4, containing 0.02 % Sodium azide, 50 % glycerol.
Handling Advice:	Avoid repeated freeze-thaw cycles.
Expiry Date:	12 months

Images



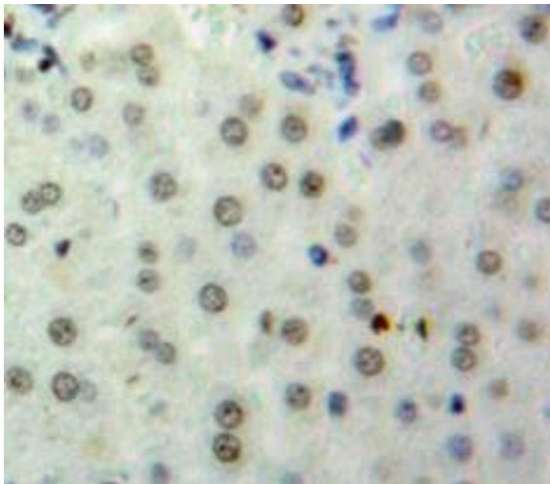
Western Blotting

Image 1.



Western Blotting

Image 2. Western Blot; Sample: Human Liver lysate; Primary Ab: 2µg/mL Rabbit Anti-Human HIST2H2BE Antibody
Second Ab: 0.2µg/mL HRP-Linked Caprine Anti-Rabbit IgG Polyclonal Antibody (Catalog: SAA544Rb19)



Immunohistochemistry

Image 3. Used in DAB staining on formalin fixed paraffin-embedded Liver tissue