



[Go to Product page](#)

Datasheet for ABIN1980442

anti-IL-37 antibody (AA 46-218)

3 Images

Overview

Quantity:	100 µL
Target:	IL-37 (IL37)
Binding Specificity:	AA 46-218
Reactivity:	Human
Host:	Rabbit
Clonality:	Polyclonal
Conjugate:	This IL-37 antibody is un-conjugated
Application:	Western Blotting (WB), Immunohistochemistry (IHC), Immunocytochemistry (ICC)

Product Details

Immunogen:	IL1z (Val46-Asp218)
Isotype:	IgG
Specificity:	The antibody is a rabbit polyclonal antibody raised against IL1z. It has been selected for its ability to recognize IL1z in immunohistochemical staining and western blotting.
Purification:	Antigen-specific affinity chromatography

Target Details

Target:	IL-37 (IL37)
Alternative Name:	Interleukin 1 Zeta (IL1z) (IL37 Products)
Background:	Alternative Names: IL1F7, IL37, FIL1, FIL1(ZETA), FIL1Z, IL-1F7, IL-1H4, IL-1RP1, IL1H4, IL1RP1,

Target Details

Interleukin 37, Interleukin-1-Related Protein, Interleukin 1 Family, Member 7

Application Details

Application Notes: • Western blotting: 1:50-400 Immunocytochemistry in formalin fixed cells: 1:50-500 Immunohistochemistry in formalin fixed frozen section: 1:50-500 Immunohistochemistry in paraffin section: 1:10-100 Enzyme-linked Immunosorbent Assay: 1:100-1:5000 Optimal working dilutions must be determined by end user.

Comment: The thermal stability is described by the loss rate. The loss rate was determined by accelerated thermal degradation test, that is, incubate the protein at 37°C for 48h, and no obvious degradation and precipitation were observed. The loss rate is less than 5% within the expiration date under appropriate storage condition.

Restrictions: For Research Use only

Handling

Format: Liquid

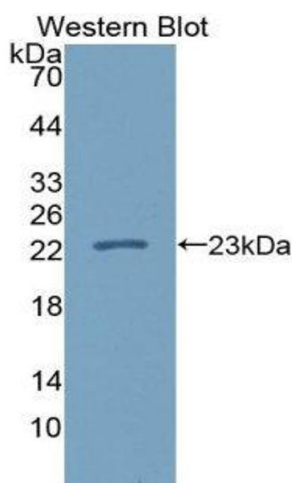
Concentration: Lot specific

Buffer: PBS, pH 7.4, containing 0.02 % Sodium azide, 50 % glycerol.

Handling Advice: Avoid repeated freeze-thaw cycles.

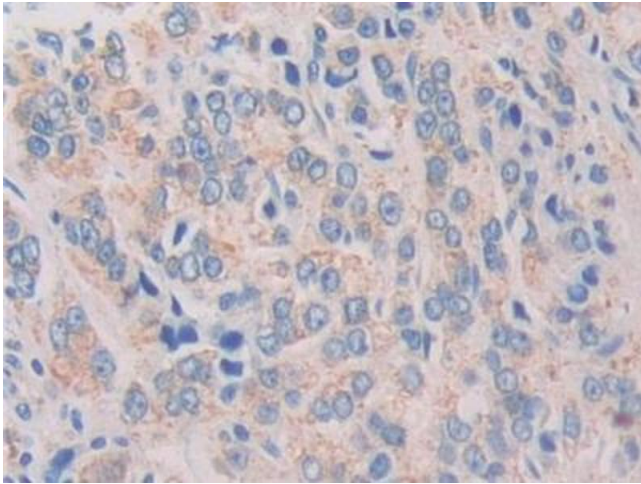
Expiry Date: 12 months

Images



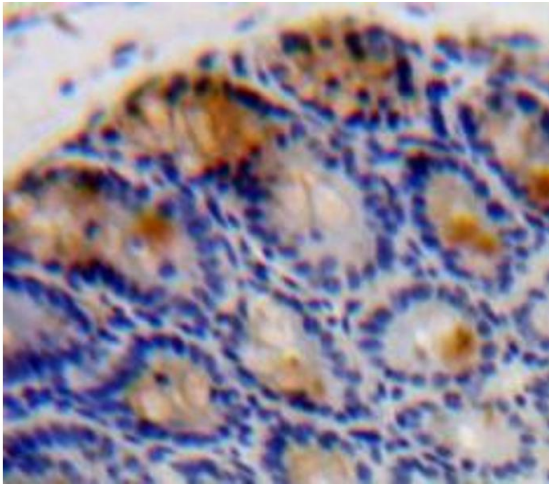
Western Blotting

Image 1.



Immunohistochemistry

Image 2. DAB staining on IHC-P; Samples: Human Prostate cancer Tissue



Immunohistochemistry

Image 3. Used in DAB staining on formalin fixed paraffin-embedded Intestine tissue