



[Go to Product page](#)

Datasheet for ABIN1980449  
**anti-LAMC2 antibody (AA 1003-1192)**

2 Images

### Overview

Quantity:	100 µL
Target:	LAMC2
Binding Specificity:	AA 1003-1192
Reactivity:	Rat
Host:	Rabbit
Clonality:	Polyclonal
Application:	Western Blotting (WB), Immunohistochemistry (IHC), Immunocytochemistry (ICC)

### Product Details

Immunogen:	LAMC2 (Thr1003-Gln1192)
Isotype:	IgG
Specificity:	The antibody is a rabbit polyclonal antibody raised against LAMC2. It has been selected for its ability to recognize LAMC2 in immunohistochemical staining and western blotting.
Purification:	Antigen-specific affinity chromatography

### Target Details

Target:	LAMC2
Alternative Name:	Laminin Gamma 2 (LAMC2) ( <a href="#">LAMC2 Products</a> )
Background:	Alternative Names: B2T, EBR2, EBR2A, LAMB2T, LAMNB2, Kalinin/nicein/epiligrin 100 kDa subunit, Cell-scattering factor 140 kDa subunit, Ladsin 140 kDa, Large adhesive scatter factor 140 kDa

## Application Details

Application Notes: • Western blotting: 1:50-400 Immunocytochemistry in formalin fixed cells: 1:50-500 Immunohistochemistry in formalin fixed frozen section: 1:50-500 Immunohistochemistry in paraffin section: 1:10-100 Enzyme-linked Immunosorbent Assay: 1:100-1:5000 Optimal working dilutions must be determined by end user.

Comment: The thermal stability is described by the loss rate. The loss rate was determined by accelerated thermal degradation test, that is, incubate the protein at 37°C for 48h, and no obvious degradation and precipitation were observed. The loss rate is less than 5% within the expiration date under appropriate storage condition.

Restrictions: For Research Use only

## Handling

Format: Liquid

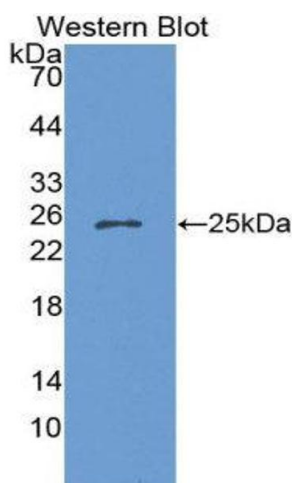
Concentration: Lot specific

Buffer: PBS, pH 7.4, containing 0.02 % Sodium azide, 50 % glycerol.

Handling Advice: Avoid repeated freeze-thaw cycles.

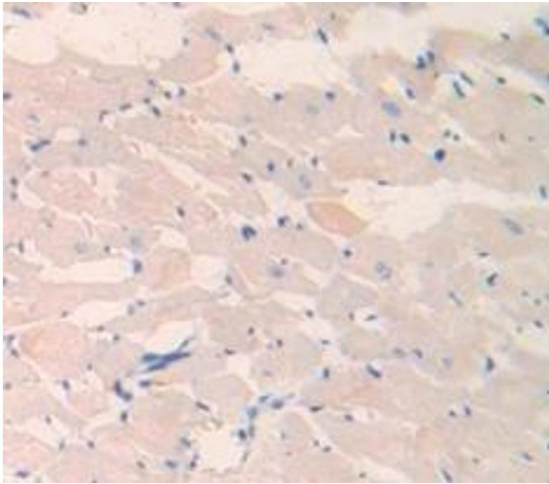
Expiry Date: 12 months

## Images



### Western Blotting

Image 1.



### Immunohistochemistry

**Image 2.** Used in DAB staining on formalin fixed paraffin-embedded Kidney tissue