



[Go to Product page](#)

Datasheet for ABIN1980463
anti-SMAD6 antibody (AA 171-441)

3 Images

Overview

Quantity:	100 µL
Target:	SMAD6
Binding Specificity:	AA 171-441
Reactivity:	Rat
Host:	Rabbit
Clonality:	Polyclonal
Conjugate:	This SMAD6 antibody is un-conjugated
Application:	Western Blotting (WB), Immunohistochemistry (IHC), Immunocytochemistry (ICC)

Product Details

Immunogen:	Smad6 (Gln171-Asp441)
Isotype:	IgG
Specificity:	The antibody is a rabbit polyclonal antibody raised against Smad6. It has been selected for its ability to recognize Smad6 in immunohistochemical staining and western blotting.
Purification:	Antigen-specific affinity chromatography

Target Details

Target:	SMAD6
Alternative Name:	Mothers Against Decapentaplegic Homolog 6 (Smad6) (SMAD6 Products)
Background:	Alternative Names: MADH6, MADH7

Target Details

Pathways: [Chromatin Binding](#)

Application Details

Application Notes:

- Western blotting: 1:50-400 Immunocytochemistry in formalin fixed cells: 1:50-500 Immunohistochemistry in formalin fixed frozen section: 1:50-500 Immunohistochemistry in paraffin section: 1:10-100 Enzyme-linked Immunosorbent Assay: 1:100-1:5000 Optimal working dilutions must be determined by end user.

Comment: The thermal stability is described by the loss rate. The loss rate was determined by accelerated thermal degradation test, that is, incubate the protein at 37°C for 48h, and no obvious degradation and precipitation were observed. The loss rate is less than 5% within the expiration date under appropriate storage condition.

Restrictions: For Research Use only

Handling

Format: Liquid

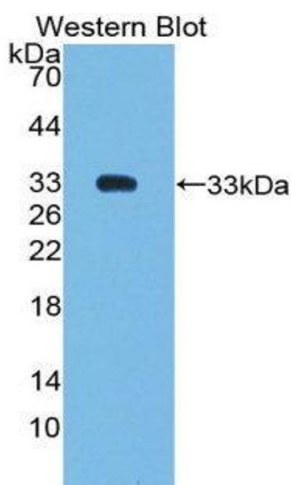
Concentration: Lot specific

Buffer: PBS, pH 7.4, containing 0.02 % Sodium azide, 50 % glycerol.

Handling Advice: Avoid repeated freeze-thaw cycles.

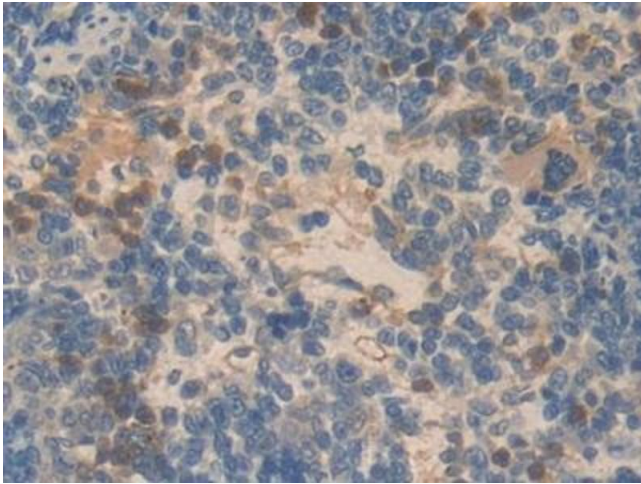
Expiry Date: 12 months

Images



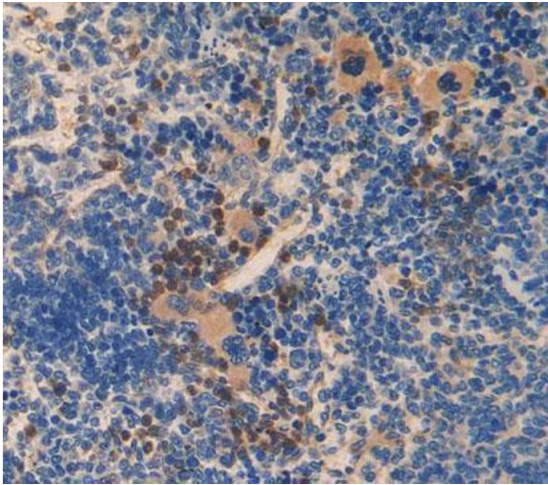
Western Blotting

Image 1.



Immunohistochemistry

Image 2. DAB staining on IHC-P; Samples: Rat Spleen Tissue



Immunohistochemistry

Image 3. Used in DAB staining on formalin fixed paraffin-embedded spleen tissue