



[Go to Product page](#)

Datasheet for ABIN1980499
anti-Reelin antibody (AA 2086-2296)

3 Images

Overview

Quantity:	100 µL
Target:	Reelin (RELN)
Binding Specificity:	AA 2086-2296
Reactivity:	Human
Host:	Rabbit
Clonality:	Polyclonal
Application:	Western Blotting (WB), Immunohistochemistry (IHC), Immunocytochemistry (ICC)

Product Details

Immunogen:	Reelin (Gly2086-Pro2296)
Isotype:	IgG
Specificity:	The antibody is a rabbit polyclonal antibody raised against RL. It has been selected for its ability to recognize RL in immunohistochemical staining and western blotting.
Purification:	Antigen-specific affinity chromatography

Target Details

Target:	Reelin (RELN)
Alternative Name:	Reelin (RL) (RELN Products)
Background:	Alternative Names: RELN
Pathways:	Synaptic Membrane

Application Details

Application Notes: • Western blotting: 1:50-400 Immunocytochemistry in formalin fixed cells: 1:50-500 Immunohistochemistry in formalin fixed frozen section: 1:50-500 Immunohistochemistry in paraffin section: 1:10-100 Enzyme-linked Immunosorbent Assay: 1:100-1:5000 Optimal working dilutions must be determined by end user.

Comment: The thermal stability is described by the loss rate. The loss rate was determined by accelerated thermal degradation test, that is, incubate the protein at 37°C for 48h, and no obvious degradation and precipitation were observed. The loss rate is less than 5% within the expiration date under appropriate storage condition.

Restrictions: For Research Use only

Handling

Format: Liquid

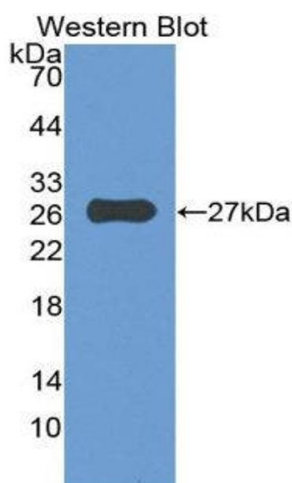
Concentration: Lot specific

Buffer: PBS, pH 7.4, containing 0.02 % Sodium azide, 50 % glycerol.

Handling Advice: Avoid repeated freeze-thaw cycles.

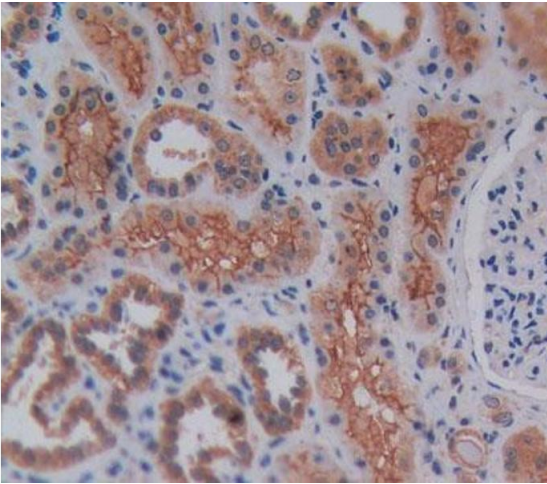
Expiry Date: 12 months

Images



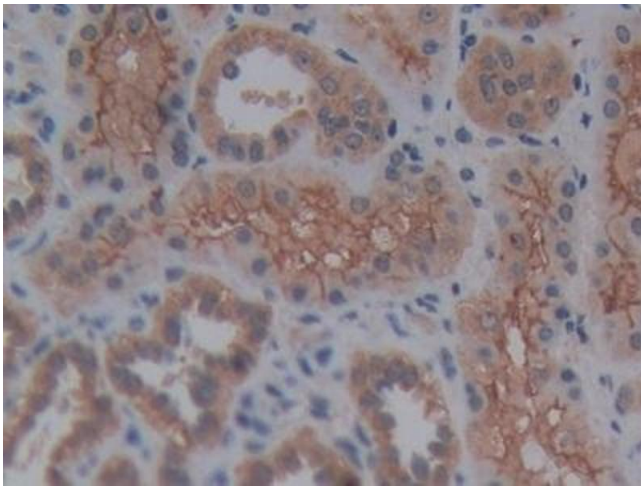
Western Blotting

Image 1.



Immunohistochemistry

Image 2. Used in DAB staining on formalin fixed paraffin-embedded kidney tissue



Immunohistochemistry

Image 3. DAB staining on IHC-P; Samples: Human Kidney Tissue