

Datasheet for ABIN1980501
anti-Reelin antibody (AA 2398-2608)

2 Images

[Go to Product page](#)

Overview

Quantity:	100 µL
Target:	Reelin (RELN)
Binding Specificity:	AA 2398-2608
Reactivity:	Human
Host:	Rabbit
Clonality:	Polyclonal
Application:	Western Blotting (WB), Immunohistochemistry (IHC), Immunocytochemistry (ICC)

Product Details

Immunogen:	Reelin (Glu2398-Leu2608)
Isotype:	IgG
Specificity:	The antibody is a rabbit polyclonal antibody raised against RL. It has been selected for its ability to recognize RL in immunohistochemical staining and western blotting.
Purification:	Antigen-specific affinity chromatography

Target Details

Target:	Reelin (RELN)
Alternative Name:	Reelin (RL) (RELN Products)
Background:	Alternative Names: RELN
Pathways:	Synaptic Membrane

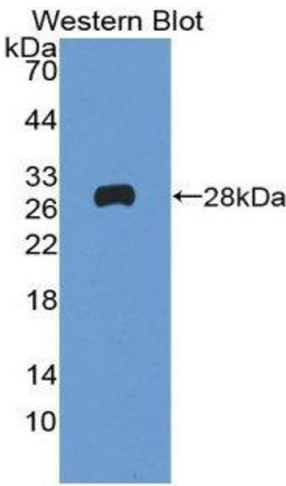
Application Details

Application Notes:	<ul style="list-style-type: none">Western blotting: 1:50-400 Immunocytochemistry in formalin fixed cells: 1:50-500 Immunohistochemistry in formalin fixed frozen section: 1:50-500 Immunohistochemistry in paraffin section: 1:10-100 Enzyme-linked Immunosorbent Assay: 1:100-1:5000 Optimal working dilutions must be determined by end user.
Comment:	The thermal stability is described by the loss rate. The loss rate was determined by accelerated thermal degradation test, that is, incubate the protein at 37°C for 48h, and no obvious degradation and precipitation were observed. The loss rate is less than 5% within the expiration date under appropriate storage condition.
Restrictions:	For Research Use only

Handling

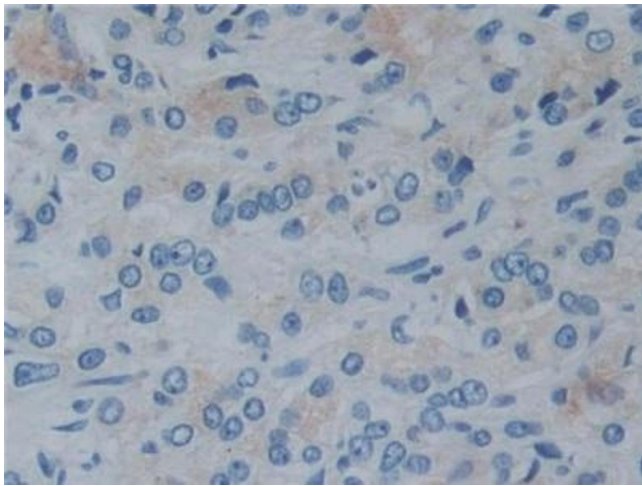
Format:	Liquid
Concentration:	Lot specific
Buffer:	PBS, pH 7.4, containing 0.02 % Sodium azide, 50 % glycerol.
Handling Advice:	Avoid repeated freeze-thaw cycles.
Expiry Date:	12 months

Images



Western Blotting

Image 1.



Immunohistochemistry

Image 2. DAB staining on IHC-P;;Samples: Human Prostate cancer Tissue