

Datasheet for ABIN1980509
anti-SSRP1 antibody (AA 6-246)

2 Images

[Go to Product page](#)

Overview

Quantity:	100 µL
Target:	SSRP1
Binding Specificity:	AA 6-246
Reactivity:	Human
Host:	Rabbit
Clonality:	Polyclonal
Application:	Western Blotting (WB), Immunohistochemistry (IHC), Immunocytochemistry (ICC)

Product Details

Immunogen:	SSRP1 (Glu6-Pro246)
Isotype:	IgG
Specificity:	The antibody is a rabbit polyclonal antibody raised against SSRP1. It has been selected for its ability to recognize SSRP1 in immunohistochemical staining and western blotting.
Purification:	Antigen-specific affinity chromatography

Target Details

Target:	SSRP1
Abstract:	SSRP1 Products
Background:	Alternative Names: FACT, FACT80, T160, Facilitates Chromatin Remodeling 80 kDa Subunit, Recombination signal sequence recognition protein 1, Chromatin-specific transcription elongation factor 80

Target Details

Pathways: [Chromatin Binding](#)

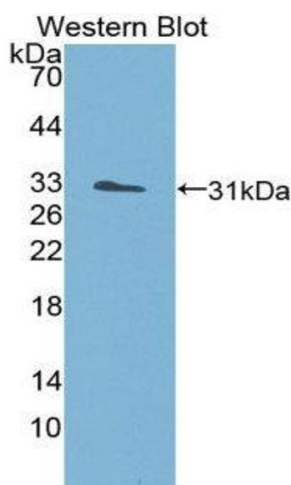
Application Details

Application Notes:	<ul style="list-style-type: none">Western blotting: 1:50-400 Immunocytochemistry in formalin fixed cells: 1:50-500 Immunohistochemistry in formalin fixed frozen section: 1:50-500 Immunohistochemistry in paraffin section: 1:10-100 Enzyme-linked Immunosorbent Assay: 1:100-1:5000 Optimal working dilutions must be determined by end user.
Comment:	The thermal stability is described by the loss rate. The loss rate was determined by accelerated thermal degradation test, that is, incubate the protein at 37°C for 48h, and no obvious degradation and precipitation were observed. The loss rate is less than 5% within the expiration date under appropriate storage condition.
Restrictions:	For Research Use only

Handling

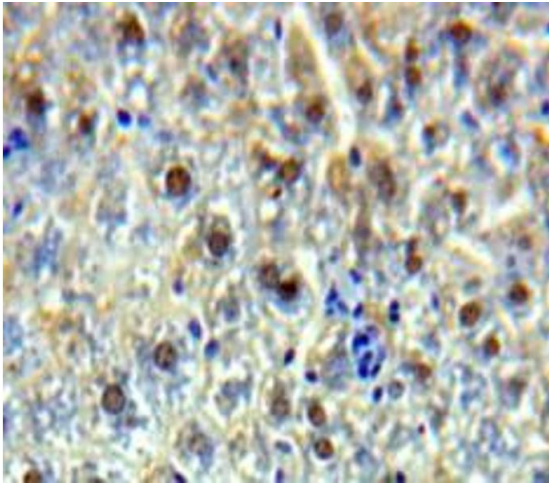
Format:	Liquid
Concentration:	Lot specific
Buffer:	PBS, pH 7.4, containing 0.02 % Sodium azide, 50 % glycerol.
Handling Advice:	Avoid repeated freeze-thaw cycles.
Expiry Date:	12 months

Images



Western Blotting

Image 1.



Immunohistochemistry

Image 2. Used in DAB staining on formalin fixed paraffin-embedded Liver tissue