

Datasheet for ABIN1980510  
**anti-Spt6 antibody (AA 532-666)**[Go to Product page](#)

## 2 Images

## Overview

Quantity:	100 µL
Target:	Spt6 (SUPT6H)
Binding Specificity:	AA 532-666
Reactivity:	Human
Host:	Rabbit
Clonality:	Polyclonal
Application:	Western Blotting (WB), Immunohistochemistry (IHC), Immunocytochemistry (ICC)

## Product Details

Immunogen:	ESLFRE conjugating SUPT6H (ESLFRE+Glu532-Met666)
Isotype:	IgG
Specificity:	The antibody is a rabbit polyclonal antibody raised against SUPT6H. It has been selected for its ability to recognize SUPT6H in immunohistochemical staining and western blotting.
Purification:	Antigen-specific affinity chromatography

## Target Details

Target:	Spt6 (SUPT6H)
Abstract:	<a href="#">SUPT6H Products</a>
Background:	Alternative Names: SPT6, SPT6H, emb-5, Histone chaperone suppressor of Ty6, Tat-cotransactivator 2 protein, Transcription elongation factor SPT6

## Target Details

Pathways: [Regulation of Leukocyte Mediated Immunity](#), [Regulation of Muscle Cell Differentiation](#), [Production of Molecular Mediator of Immune Response](#)

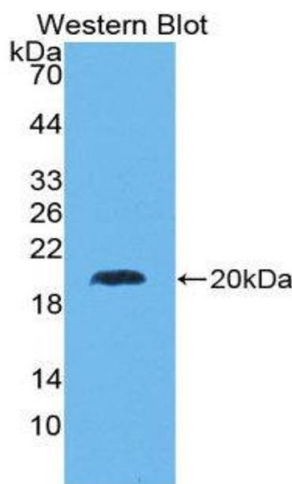
## Application Details

Application Notes:	<ul style="list-style-type: none"><li>Western blotting: 1:50-400 Immunocytochemistry in formalin fixed cells: 1:50-500 Immunohistochemistry in formalin fixed frozen section: 1:50-500 Immunohistochemistry in paraffin section: 1:10-100 Enzyme-linked Immunosorbent Assay: 1:100-1:5000 Optimal working dilutions must be determined by end user.</li></ul>
Comment:	The thermal stability is described by the loss rate. The loss rate was determined by accelerated thermal degradation test, that is, incubate the protein at 37&degC for 48h, and no obvious degradation and precipitation were observed. The loss rate is less than 5% within the expiration date under appropriate storage condition.
Restrictions:	For Research Use only

## Handling

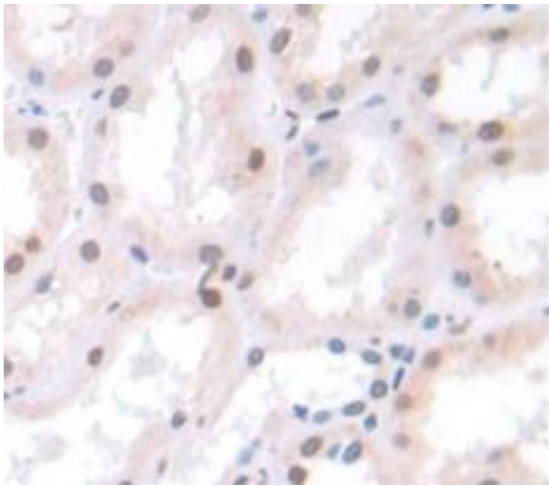
Format:	Liquid
Concentration:	Lot specific
Buffer:	PBS, pH 7.4, containing 0.02 % Sodium azide, 50 % glycerol.
Handling Advice:	Avoid repeated freeze-thaw cycles.
Expiry Date:	12 months

## Images



### Western Blotting

Image 1.



#### Immunohistochemistry

**Image 2.** Used in DAB staining on formalin fixed paraffin-embedded Kidney tissue