

Datasheet for ABIN1981265

Mouse anti-Camel IgG (Heavy & Light Chain) Antibody[1 Image](#)[1 Publication](#)[Go to Product page](#)

Overview

| | |
|----------------------|---------------------|
| Quantity: | 500 µL |
| Target: | IgG |
| Binding Specificity: | Heavy & Light Chain |
| Reactivity: | Llama, Camel |
| Host: | Mouse |
| Clonality: | Monoclonal |
| Application: | Immunoassay (IA) |

Product Details

| | |
|----------------------|---|
| Immunogen: | Llama IgG (H&L) |
| Clone: | Cam17-2 |
| Isotype: | IgG1 |
| Specificity: | Specific to all IgG subclasses of Old World and New World Camelids |
| No Cross-Reactivity: | Chicken, Rabbit, Sheep (Ovine), Goat, Mouse (Murine), Rat (Rattus), Human |
| Purification: | Affinity chromatography using Protein A coupled to sepharose |
| Purity: | > 95 % as determined by SDS gel electrophoresis |

Target Details

| | |
|-----------|------------------------------|
| Target: | IgG |
| Abstract: | IgG Products |

Target Details

Target Type: Antibody

Molecular Weight: 150 kDa

Application Details

Application Notes: ELISA: 5-10 µg/mL

Restrictions: For Research Use only

Handling

Format: Liquid

Concentration: 1 mg/mL

Buffer: PBS, pH 7.4, 0.02 % sodium azide

Preservative: Sodium azide

Precaution of Use: This product contains sodium azide: a POISONOUS AND HAZARDOUS SUBSTANCE which should be handled by trained staff only.

Storage: 4 °C

Publications

Product cited in: Holzlohner, Butze, Maier, Hebel, Schliebs, Micheel, Fünér, Heidicke, Hanack: "Generation of murine monoclonal antibodies with specificity against conventional camelid IgG1 and heavy-chain only IgG2/3." in: **Veterinary immunology and immunopathology**, Vol. 197, pp. 1-6, (2018) ([PubMed](#)).

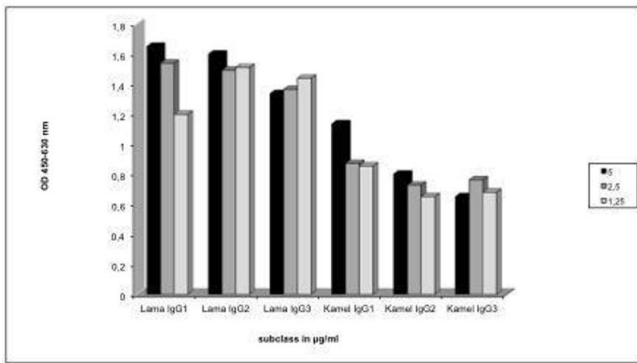


Image 1.