



[Go to Product page](#)

Datasheet for ABIN1981267

Mouse anti-Camel IgG1 (Heavy & Light Chain) Antibody

1 Image

1 Publication

Overview

Quantity:	250 µL
Target:	IgG1
Binding Specificity:	Heavy & Light Chain
Reactivity:	Llama, Camel
Host:	Mouse
Clonality:	Monoclonal
Application:	Immunoassay (IA)

Product Details

Immunogen:	Llama IgG1 (H&L)
Clone:	Cam27-7
Isotype:	IgG1
Specificity:	Specific to the IgG1 subclasse of Old World and New World Camelids
No Cross-Reactivity:	Chicken, Rabbit, Sheep (Ovine), Goat, Mouse (Murine), Rat (Rattus), Human
Purification:	Affinity chromatography using Protein A coupled to sepharose
Purity:	> 95 % as determined by SDS gel electrophoresis

Target Details

Target:	IgG1
Abstract:	IgG1 Products

Target Details

Target Type: Antibody

Molecular Weight: 150 kDa

Application Details

Application Notes: ELISA: 5-10 µg/mL

Restrictions: For Research Use only

Handling

Format: Liquid

Concentration: 1 mg/mL

Buffer: PBS, pH 7.4, 0.02 % sodium azide

Preservative: Sodium azide

Precaution of Use: This product contains sodium azide: a POISONOUS AND HAZARDOUS SUBSTANCE which should be handled by trained staff only.

Storage: 4 °C

Publications

Product cited in: Holzlohner, Butze, Maier, Hebel, Schliebs, Micheel, Fünér, Heidicke, Hanack: "Generation of murine monoclonal antibodies with specificity against conventional camelid IgG1 and heavy-chain only IgG2/3." in: **Veterinary immunology and immunopathology**, Vol. 197, pp. 1-6, (2018) ([PubMed](#)).

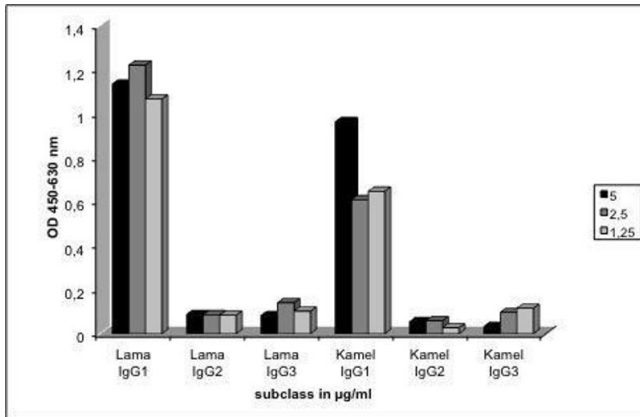


Image 1.