

Datasheet for ABIN1981304  
**anti-LYZ antibody (C-Term)**



[Go to Product page](#)

1 Image

## Overview

Quantity:	400 µL
Target:	LYZ
Binding Specificity:	AA 119-154, C-Term
Reactivity:	Human
Host:	Rabbit
Clonality:	Polyclonal
Conjugate:	This LYZ antibody is un-conjugated
Application:	Immunohistochemistry (Paraffin-embedded Sections) (IHC (p))

## Product Details

Immunogen:	This LYZ antibody is generated from a rabbit immunized with a KLH conjugated synthetic peptide between 119-154 amino acids from the C-terminal region of human LYZ.
Clone:	RB48842
Isotype:	Ig Fraction
Purification:	This antibody is purified through a protein A column, followed by peptide affinity purification.

## Target Details

Target:	LYZ
Alternative Name:	LYZ ( <a href="#">LYZ Products</a> )
Background:	Lysozymes have primarily a bacteriolytic function, those in tissues and body fluids are

## Target Details

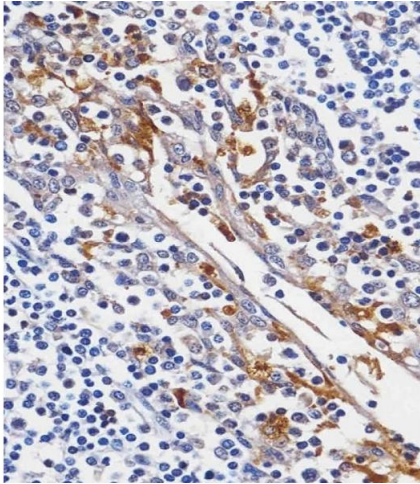
	associated with the monocyte- macrophage system and enhance the activity of immunoagents.
Molecular Weight:	16537
Gene ID:	4069
UniProt:	<a href="#">P61626</a>

## Application Details

Application Notes:	IHC-P: 1:25
Restrictions:	For Research Use only

## Handling

Format:	Liquid
Buffer:	Purified polyclonal antibody supplied in PBS with 0.09 % (W/V) sodium azide.
Preservative:	Sodium azide
Precaution of Use:	This product contains Sodium azide: a POISONOUS AND HAZARDOUS SUBSTANCE which should be handled by trained staff only.
Storage:	4 °C,-20 °C
Storage Comment:	Maintain refrigerated at 2-8°C for up to 6 months. For long term storage store at -20°C in small aliquots to prevent freeze-thaw cycles.
Expiry Date:	6 months



#### Immunohistochemistry (Paraffin-embedded Sections)

**Image 1.** C staining LYZ in human tonsil tissue sections by Immunohistochemistry (IHC-P - paraformaldehyde-fixed, paraffin-embedded sections). Tissue was fixed with formaldehyde and blocked with 3 % BSA for 0.5 hour at room temperature, antigen retrieval was by heat mediation with a citrate buffer (pH 6). Samples were incubated with primary antibody (1/25) for 1 hour at 37 °C. A undiluted biotinylated goat polyvalent antibody was used as the secondary antibody.