



[Go to Product page](#)

Datasheet for ABIN1981868

## anti-CD300E antibody

2 Images

1 Publication

### Overview

Quantity:	0.1 mg
Target:	CD300E
Reactivity:	Human
Host:	Mouse
Clonality:	Monoclonal
Conjugate:	This CD300E antibody is un-conjugated
Application:	Western Blotting (WB), Flow Cytometry (FACS), Immunoprecipitation (IP)

### Product Details

Immunogen:	CD300e-HA-transfected cells
Clone:	UP-H2
Isotype:	IgG1 kappa
Specificity:	The mouse monoclonal antibody UP-H2 recognizes an extracellular epitope on CD300e / IREM-2, a 32 kDa glycoprotein expressed by mature monocytes and peripheral blood myeloid dendritic cells.
Cross-Reactivity (Details):	Human
Purification:	Purified by protein-A affinity chromatography.
Purity:	> 95 % (by SDS-PAGE)

## Target Details

---

Target:	CD300E
Alternative Name:	CD300e ( <a href="#">CD300E Products</a> )
Background:	CD300e molecule,CD300e / IREM-2 (immune receptor expressed by myeloid cells 2), also known as CLM2 or LMIR6, is a monomeric transmembrane glycoprotein with a single extracellular immunoglobulin-like domain. Intracellularly it associates with DAP-12, an ITAM-containing adaptor molecule. CD300e is expressed on mature monocytes and peripheral blood myeloid dendritic cells. Its crosslinking leads to release of pro-inflammatory cytokines, and increased expression of activation markers.,CLM2, CMRF35-A5, LMIR6, IREM-2, PlgR2
Gene ID:	342510
UniProt:	<a href="#">Q496F6</a>

## Application Details

---

Application Notes:	Flow cytometry: Recommended dilution: 1-4 µg/mL.
Restrictions:	For Research Use only

## Handling

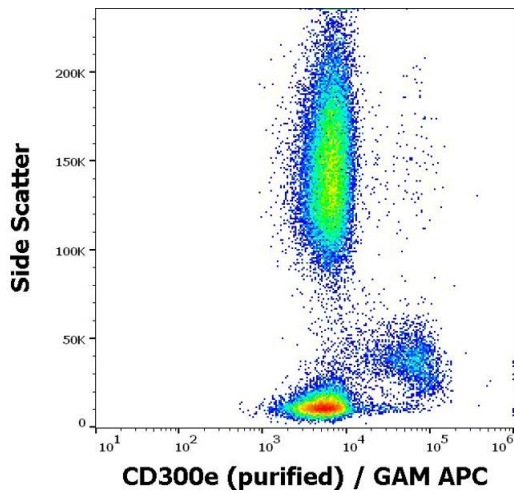
---

Concentration:	1 mg/mL
Buffer:	Phosphate buffered saline (PBS), pH 7.4, 15 mM sodium azide
Preservative:	Sodium azide
Precaution of Use:	This product contains Sodium azide: a POISONOUS AND HAZARDOUS SUBSTANCE which should be handled by trained staff only.
Handling Advice:	Do not freeze. Do not use after expiration date stamped on vial label.
Storage:	4 °C
Storage Comment:	Store at 2-8°C. Do not freeze.

## Publications

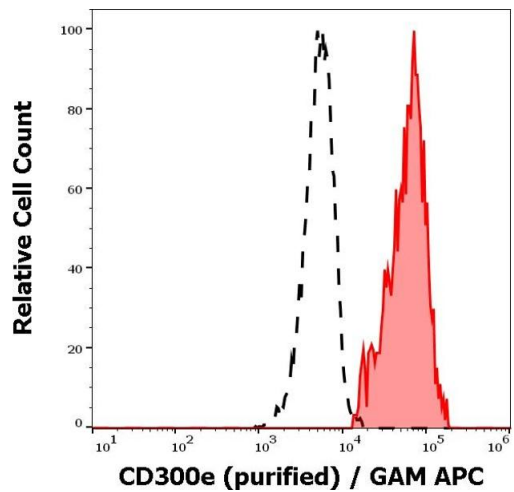
---

Product cited in:	Brckalo, Calzetti, Pérez-Cabezas, Borrs, Cassatella, López-Botet: "Functional analysis of the CD300e receptor in human monocytes and myeloid dendritic cells." in: <b>European journal of immunology</b> , Vol. 40, Issue 3, pp. 722-32, (2010) ( <a href="#">PubMed</a> ).
-------------------	---



### Flow Cytometry

**Image 1.** Flow cytometry surface staining pattern of human peripheral whole blood stained using anti-human CD300e (UP-H2) purified antibody (concentration in sample 4 µg/mL, GAM APC).



### Flow Cytometry

**Image 2.** Separation of human monocytes (red-filled) from CD300e negative lymphocytes (black-dashed) in flow cytometry analysis (surface staining) of human peripheral whole blood using anti-human CD300e (UP-H2) purified antibody (concentration in sample 4 µg/mL, GAM APC).