



[Go to Product page](#)

Datasheet for ABIN1981879  
**anti-CD300E antibody (APC)**

1 Image

2 Publications

### Overview

Quantity:	100 tests
Target:	CD300E
Reactivity:	Human
Host:	Mouse
Clonality:	Monoclonal
Conjugate:	This CD300E antibody is conjugated to APC
Application:	Flow Cytometry (FACS)

### Product Details

Immunogen:	CD300e-HA-transfected cells
Clone:	UP-H2
Isotype:	IgG1 kappa
Specificity:	The mouse monoclonal antibody UP-H2 recognizes an extracellular epitope on CD300e / IREM-2, a 32 kDa glycoprotein expressed by mature monocytes and peripheral blood myeloid dendritic cells.
Cross-Reactivity (Details):	Human
Purification:	Purified antibody is conjugated with activated allophycocyanin (APC) under optimum conditions and unconjugated antibody and free fluorochrome are removed by size-exclusion chromatography.

## Target Details

---

Target:	CD300E
Alternative Name:	CD300e ( <a href="#">CD300E Products</a> )
Background:	CD300e molecule, CD300e / IREM-2 (immune receptor expressed by myeloid cells 2), also known as CLM2 or LMIR6, is a monomeric transmembrane glycoprotein with a single extracellular immunoglobulin-like domain. Intracellularly it associates with DAP-12, an ITAM-containing adaptor molecule. CD300e is expressed on mature monocytes and peripheral blood myeloid dendritic cells. Its crosslinking leads to release of pro-inflammatory cytokines, and increased expression of activation markers., CLM2, CMRF35-A5, LMIR6, IREM-2, PlgR2
Gene ID:	342510
UniProt:	<a href="#">Q496F6</a>

## Application Details

---

Application Notes:	Flow cytometry: The reagent is designed for analysis of human blood cells using 10 µL reagent / 100 µL of whole blood or 10 <sup>6</sup> cells in a suspension. The content of a vial (1 ml) is sufficient for 100 tests.
Comment:	The purified antibody is conjugated with cross-linked Allophycocyanin (APC) under optimum conditions. The conjugate is purified by size-exclusion chromatography and adjusted for direct use. No reconstitution is necessary.
Restrictions:	For Research Use only

## Handling

---

Buffer:	Stabilizing phosphate buffered saline (PBS), pH 7.4, 15 mM sodium azide
Preservative:	Sodium azide
Precaution of Use:	This product contains Sodium azide: a POISONOUS AND HAZARDOUS SUBSTANCE which should be handled by trained staff only.
Handling Advice:	Do not freeze. Avoid prolonged exposure to light. Do not use after expiration date stamped on vial label. Short-term exposure to room temperature should not affect the quality of the reagent. However, if reagent is stored under any conditions other than those specified, the conditions must be verified by the user.
Storage:	4 °C

## Handling

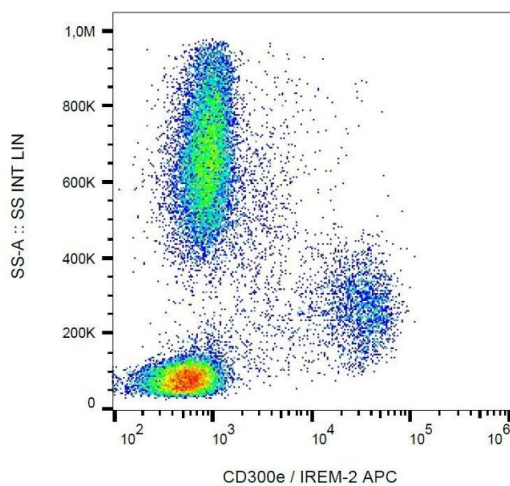
Storage Comment: Store at 2-8°C. Protect from prolonged exposure to light. Do not freeze.

## Publications

Product cited in: Brckalo, Calzetti, Pérez-Cabezas, Borrs, Cassatella, López-Botet: "Functional analysis of the CD300e receptor in human monocytes and myeloid dendritic cells." in: **European journal of immunology**, Vol. 40, Issue 3, pp. 722-32, (2010) ([PubMed](#)).

Aguilar, Alvarez-Errico, García-Montero, Orfao, Sayós, López-Botet: "Molecular characterization of a novel immune receptor restricted to the monocytic lineage." in: **Journal of immunology (Baltimore, Md. : 1950)**, Vol. 173, Issue 11, pp. 6703-11, (2004) ([PubMed](#)).

## Images



### Flow Cytometry

**Image 1.** Surface staining of human peripheral blood with anti-human CD300e (UP-H2) APC.