

Datasheet for ABIN1983316

anti-Kallikrein 15 antibody (AA 17-256)[Go to Product page](#)**1** Image

Overview

Quantity:	100 µg
Target:	Kallikrein 15 (KLK15)
Binding Specificity:	AA 17-256
Reactivity:	Human
Host:	Mouse
Clonality:	Monoclonal
Conjugate:	This Kallikrein 15 antibody is un-conjugated
Application:	Western Blotting (WB)

Product Details

Immunogen:	AA 17-256
Clone:	MM0429-5Z12
Isotype:	IgG2
Characteristics:	Mouse anti human Kallikrein 15

Target Details

Target:	Kallikrein 15 (KLK15)
Alternative Name:	Kallikrein 15 (KLK15 Products)
Pathways:	Complement System

Application Details

Application Notes: Optimal dilutions should be determined by each laboratory for each application.

Restrictions: For Research Use only

Handling

Format: Lyophilized

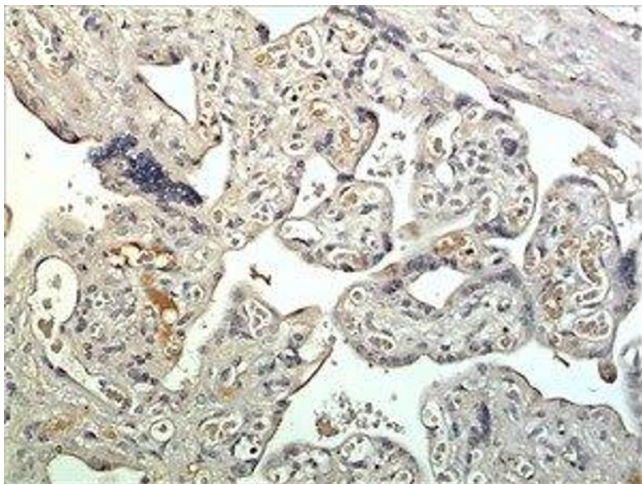
Reconstitution: 200 μ L of PBS, pH 7.4

Concentration: 500 μ g/mL

Buffer: Lyophilized from a solution containing PBS, pH 7.4

Storage: -20 $^{\circ}$ C

Images



Immunohistochemistry

Image 1.