



[Go to Product page](#)

Datasheet for ABIN1989473

PARD6A (Human) IP-WB Antibody Pair

1 Image

Overview

Quantity:	1 set
Target:	PARD6A
Reactivity:	Human
Host:	Rabbit, Mouse
Application:	Immunoprecipitation (IP)

Product Details

Purpose:	This IP-WB antibody pair set comes with one antibody for immunoprecipitation and another to detect the precipitated protein in western blot.
Cross-Reactivity:	Human
Characteristics:	This IP-WB antibody pair set comes with one antibody for immunoprecipitation and another to detect the precipitated protein in western blot.
Components:	Antibody pair set content: 1. Antibody pair for IP: rabbit polyclonal anti-PARD6A (300 µL) 2. Antibody pair for WB: mouse purified polyclonal anti-PARD6A (50 µg)

Target Details

Target:	PARD6A
Alternative Name:	PARD6A (PARD6A Products)
Background:	Full Gene Name: par-6 partitioning defective 6 homolog alpha (C. elegans) Synonyms: PAR-6A, PAR6, PAR6C, PAR6alpha, TAX40, TIP-40

Target Details

Gene ID: 50855

Application Details

Application Notes: Optimal working dilution should be determined by the investigator.

Restrictions: For Research Use only

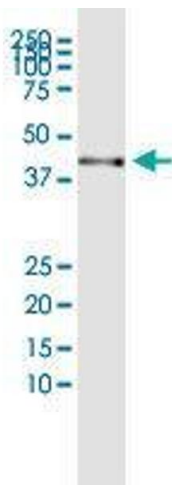
Handling

Handling Advice: Please aliquot to avoid repeated freeze thaw cycle.

Storage: -20 °C

Storage Comment: Store reagents of the antibody pair set at -20°C or lower. Please aliquot to avoid repeated freeze thaw cycle. Reagents should be returned to -20°C storage immediately after use.

Images



Western Blotting

Image 1. Immunoprecipitation of PARD6A transfected lysate using rabbit polyclonal anti-PARD6A and Protein A Magnetic Bead