

Datasheet for ABIN1989476

SARS2 (Human) IP-WB Antibody Pair



[Go to Product page](#)

1 Image

Overview

Quantity:	1 set
Target:	SARS2
Reactivity:	Human
Host:	Rabbit, Mouse
Application:	Immunoprecipitation (IP)

Product Details

Purpose:	This IP-WB antibody pair set comes with one antibody for immunoprecipitation and another to detect the precipitated protein in western blot.
Cross-Reactivity:	Human
Characteristics:	This IP-WB antibody pair set comes with one antibody for immunoprecipitation and another to detect the precipitated protein in western blot.
Components:	<p>Antibody pair set content:</p> <ol style="list-style-type: none"> 1. Antibody pair for IP: rabbit polyclonal anti-SARS2 (300 µL) 2. Antibody pair for WB: mouse purified polyclonal anti-SARS2 (50 µg)

Target Details

Target:	SARS2
Alternative Name:	SARS2 (SARS2 Products)
Background:	<p>Full Gene Name: seryl-tRNA synthetase 2, mitochondrial</p> <p>Synonyms: FLJ20450,SARS,SARSM,SERS,SYS,SerRSmt,mtSerRS</p>

Target Details

Gene ID: 54938

Application Details

Application Notes: Optimal working dilution should be determined by the investigator.

Restrictions: For Research Use only

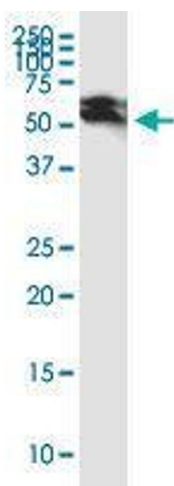
Handling

Handling Advice: Please aliquot to avoid repeated freeze thaw cycle.

Storage: -20 °C

Storage Comment: Store reagents of the antibody pair set at -20°C or lower. Please aliquot to avoid repeated freeze thaw cycle. Reagents should be returned to -20°C storage immediately after use.

Images



Western Blotting

Image 1. Immunoprecipitation of SARS2 transfected lysate using rabbit polyclonal anti-SARS2 and Protein A Magnetic Bead