

Datasheet for ABIN1989478

BCAP29 (Human) IP-WB Antibody Pair[Go to Product page](#)**1** Image

Overview

Quantity:	1 set
Target:	BCAP29
Reactivity:	Human
Host:	Rabbit, Mouse
Application:	Immunoprecipitation (IP)

Product Details

Purpose:	This IP-WB antibody pair set comes with one antibody for immunoprecipitation and another to detect the precipitated protein in western blot.
Cross-Reactivity:	Human
Characteristics:	This IP-WB antibody pair set comes with one antibody for immunoprecipitation and another to detect the precipitated protein in western blot.
Components:	Antibody pair set content: 1. Antibody pair for IP: rabbit polyclonal anti-BCAP29 (300 µL) 2. Antibody pair for WB: mouse purified polyclonal anti-BCAP29 (50 µg)

Target Details

Target:	BCAP29
Alternative Name:	BCAP29 (BCAP29 Products)
Background:	Full Gene Name: B-cell receptor-associated protein 29 Synonyms: BAP29, DKFZp686M2086

Target Details

Gene ID: 55973

Application Details

Application Notes: Optimal working dilution should be determined by the investigator.

Restrictions: For Research Use only

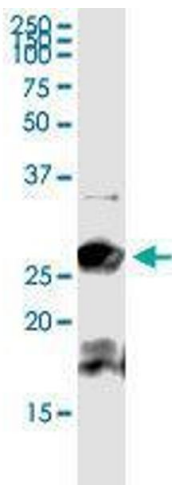
Handling

Handling Advice: Please aliquot to avoid repeated freeze thaw cycle.

Storage: -20 °C

Storage Comment: Store reagents of the antibody pair set at -20°C or lower. Please aliquot to avoid repeated freeze thaw cycle. Reagents should be returned to -20°C storage immediately after use.

Images



Western Blotting

Image 1. Immunoprecipitation of BCAP29 transfected lysate using rabbit polyclonal anti-BCAP29 and Protein A Magnetic Bead