



[Go to Product page](#)

Datasheet for ABIN1989479

PLEKHA1 (Human) IP-WB Antibody Pair

1 Image

Overview

Quantity:	1 set
Target:	PLEKHA1
Reactivity:	Human
Host:	Rabbit, Mouse
Application:	Immunoprecipitation (IP)

Product Details

Purpose:	This IP-WB antibody pair set comes with one antibody for immunoprecipitation and another to detect the precipitated protein in western blot.
Cross-Reactivity:	Human
Characteristics:	This IP-WB antibody pair set comes with one antibody for immunoprecipitation and another to detect the precipitated protein in western blot.
Components:	Antibody pair set content: 1. Antibody pair for IP: rabbit polyclonal anti-PLEKHA1 (300 µL) 2. Antibody pair for WB: mouse purified polyclonal anti-PLEKHA1 (50 µg)

Target Details

Target:	PLEKHA1
Alternative Name:	PLEKHA1 (PLEKHA1 Products)
Background:	Full Gene Name: pleckstrin homology domain containing, family A (phosphoinositide binding specific) member 1

Target Details

Synonyms: TAPP1

Gene ID: 59338

Application Details

Application Notes: Optimal working dilution should be determined by the investigator.

Restrictions: For Research Use only

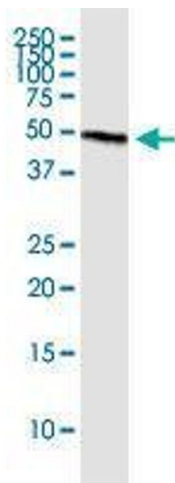
Handling

Handling Advice: Please aliquot to avoid repeated freeze thaw cycle.

Storage: -20 °C

Storage Comment: Store reagents of the antibody pair set at -20°C or lower. Please aliquot to avoid repeated freeze thaw cycle. Reagents should be returned to -20°C storage immediately after use.

Images



Western Blotting

Image 1. Immunoprecipitation of PLEKHA1 transfected lysate using rabbit polyclonal anti-PLEKHA1 and Protein A Magnetic Bead