



[Go to Product page](#)

Datasheet for ABIN1989536
anti-CLASP2 antibody (AA 1-431)

2 Images

Overview

Quantity:	100 µg
Target:	CLASP2
Binding Specificity:	AA 1-431
Reactivity:	Human
Host:	Mouse
Clonality:	Monoclonal
Conjugate:	This CLASP2 antibody is un-conjugated
Application:	Western Blotting (WB), ELISA

Product Details

Purpose:	Mouse monoclonal antibody raised against a full-length recombinant CLASP2.
Immunogen:	CLASP2 (AAH29035.1, 1 a.a. ~ 431 a.a) full-length recombinant protein with GST-pstS1 tag.
Sequence:	MRRLLICKRIC DYKSFDDDEES VDGNRPSSAA SAFKVPAPKT SGNPANSARK PGSAGGPKVVG GASKEGGAGA VDEDDFIKAF TDVPSIQIYS SRELEETLNK IREILSDDKH DWDQRANALK KIRSELLVAGA AQYDCFFQHL RLLDGALKLS AKDLRSQVVR EACITVAHLS TVLGNKFDHG AEIVPTLFN LVPNSAKVMA TSGCAAIRFI IRHTHVPRLI PLITSNCTSK SVPVRRRSFE FLDLLLQEWQ THSLERHAAV LVETIKKGIH DADAEARVEA RKT YMGLRNH FPGEAETLYN SLEPSYQKSL QTYLKSSGSV ASLPQSDRSS SSSQESLNRP FSSKWSTANP STVAGRVSAG SSKASSLPGS LQRSRSDIDV NAAAGAKAHH AAGQSVRSRGR LGAGALNAGS YASLECEAFW RSGRTAKLYS V
Clone:	3E9

Product Details

Isotype:	IgG2a
Cross-Reactivity:	Human
Characteristics:	Antibody Reactive Against Recombinant Protein.

Target Details

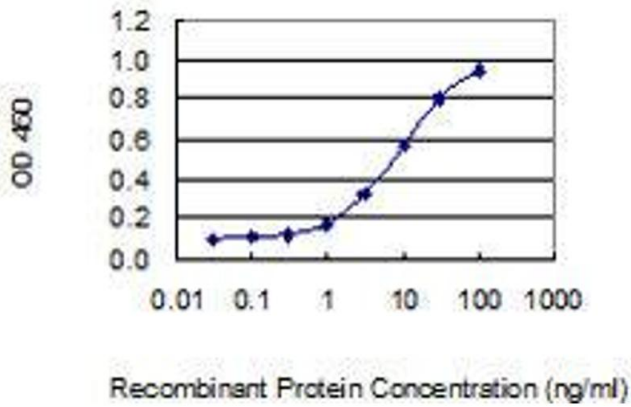
Target:	CLASP2
Alternative Name:	CLASP2 (CLASP2 Products)
Background:	Full Gene Name: cytoplasmic linker associated protein 2 Synonyms:
Gene ID:	23122
Pathways:	Microtubule Dynamics , Maintenance of Protein Location

Application Details

Application Notes:	Optimal working dilution should be determined by the investigator.
Restrictions:	For Research Use only

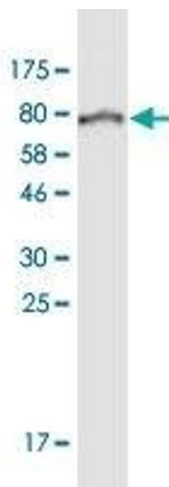
Handling

Buffer:	In 1x PBS, pH 7.4
Handling Advice:	Aliquot to avoid repeated freezing and thawing.
Storage:	-20 °C
Storage Comment:	Store at -20°C or lower. Aliquot to avoid repeated freezing and thawing.



ELISA

Image 1. Detection limit for recombinant GST tagged CLASP2 is 0.3 ng/ml as a capture antibody.



Western Blotting

Image 2. Western Blot detection against Immunogen (75.35 KDa) .