



[Go to Product page](#)

Datasheet for ABIN1989562
anti-LY6D antibody (AA 21-128)

3 Images

Overview

Quantity:	50 µL
Target:	LY6D
Binding Specificity:	AA 21-128
Reactivity:	Human
Host:	Mouse
Clonality:	Polyclonal
Conjugate:	This LY6D antibody is un-conjugated
Application:	Western Blotting (WB)

Product Details

Purpose:	Mouse polyclonal antibody raised against a full-length human LY6D protein.
Immunogen:	LY6D (AAH31330, 21 a.a. ~ 128 a.a) full-length human protein.
Sequence:	LRCHVCTSSS NCKHSVCPA SSRFCKTTNT VEPLRGNLVK KDCAESCTPS YTLQGQVSSG TSSTQCCQED LCNEKLHNAA PTRTALAHSA LSLGLALSLL AVILAPSL
Cross-Reactivity:	Human
Characteristics:	Antibody reactive against mammalian transfected lysate.

Target Details

Target:	LY6D
Alternative Name:	LY6D (LY6D Products)

Target Details

Background:	Full Gene Name: lymphocyte antigen 6 complex, locus D Synonyms: E48
Gene ID:	8581

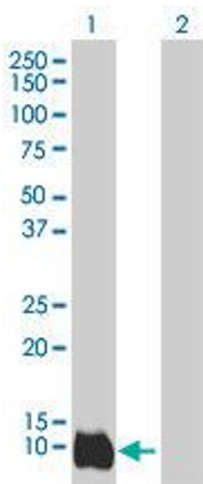
Application Details

Application Notes:	Optimal working dilution should be determined by the investigator.
Restrictions:	For Research Use only

Handling

Format:	Liquid
Buffer:	No additive
Preservative:	Without preservative
Handling Advice:	Aliquot to avoid repeated freezing and thawing.
Storage:	-20 °C
Storage Comment:	Store at -20°C or lower. Aliquot to avoid repeated freezing and thawing.

Images

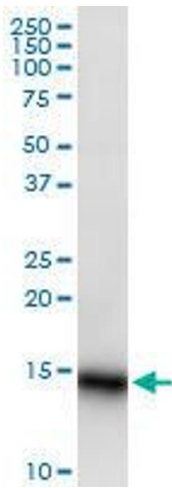


Western Blotting

Image 1. Western Blot analysis of LY6D expression in transfected 293T cell line by LY6D MaxPab polyclonal antibody.

Lane 1: LY6D transfected lysate(14.19 KDa).

Lane 2: Non-transfected lysate.



Viral Entry Inhibition

Image 2. LY6D MaxPab polyclonal antibody. Western Blot analysis of LY6D expression in A-431.



Western Blotting

Image 3. LY6D MaxPab polyclonal antibody. Western Blot analysis of LY6D expression in human pancreas.