



[Go to Product page](#)

Datasheet for ABIN1989606

CRMP1 Protein (AA 1-566) (GST tag)

1 Image

Overview

Quantity:	10 µg
Target:	CRMP1
Protein Characteristics:	AA 1-566
Origin:	Human
Source:	Wheat germ
Protein Type:	Recombinant
Purification tag / Conjugate:	This CRMP1 protein is labelled with GST tag.
Application:	Western Blotting (WB), ELISA, Antibody Array (AA), Affinity Purification (AP)

Product Details

Purpose:	CRMP1 (Human) Recombinant Protein (P01)
Sequence:	MRTTGALSDR LLIKGGRIIN DDQSLYADVY LEDGLIKQIG ENLIVPGGVK TIEANGRMVI PGGIDVNTYL QKPSQGMTAA DDFQGTRAA LVGGTTMIID HVVPEPGSSL LTSFEKWHEA ADTKSCCDYS LHVDTISWYD GVREELEVLV QDKGVNSFQV YMAYKDVYQM SDSQLYEAF FLKGLGAVIL VHAENGLIA QEQKRILEMG ITGPEGHALS RPEELEAEAV FRAITIAGRI NCPVYITKVM SKSAADIIAL ARKKGPLVFG EPIAASLGTD GTHYWSKNWA KAAAFVTSPP LSPDPTTPDY LTSLLAGDL QVTGSGHCPY STAQKAVGKD NFTLIPEGVN GIEERMTVWW DKA VATGKMD ENQFVAVTST NAAKIFNLYP RKGRIAVGSD ADVVIWDPDK LKTITAKSHK SAVEYNIFEG MECHGSPLVV ISQ GKIVFED GNINVNKGMG RFIPRKAFPE HLYQRVKIRN KVFG LQGVSR GMYDGPVYEV PATPKYATPA PSAKSSPSKH QPPPIRNLHQ SNFSLSGAQI DDNNPRRTGH RIVAPPGGRS NITSLG
Characteristics:	Human CRMP1 full-length ORF (BAG53708.1, 1 a.a. - 566 a.a.) recombinant protein with GST

Product Details

tag at N-terminal.

Purification: in vitro wheat germ expression system

Target Details

Target: CRMP1

Alternative Name: CRMP1 ([CRMP1 Products](#))

Background: Full Gene Name: collapsin response mediator protein 1
Synonyms: DPYSL1,DRP-1,DRP1

Molecular Weight: 87.8 kDa (theoretical)

Gene ID: 1400

Application Details

Application Notes: Optimal working dilution should be determined by the investigator.

Comment: Preparation method: in vitro, wheat germ expression system
Product Quality tested by: 12.5% SDS-PAGE Stained with Coomassie Blue

Restrictions: For Research Use only

Handling

Buffer: 50 mM Tris-HCl, 10 mM reduced Glutathione, pH =8.0 in the elution buffer.

Handling Advice: Aliquot to avoid repeated freezing and thawing.

Storage: -80 °C

Storage Comment: Best use within three months from the date of receipt of this protein.

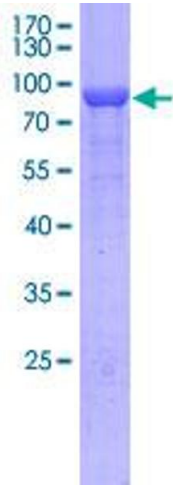


Image 1.