



[Go to Product page](#)

Datasheet for ABIN1989691  
**SMAD6 Protein (AA 1-496) (GST tag)**

1 Image

Overview

Quantity:	25 µg
Target:	SMAD6
Protein Characteristics:	AA 1-496
Origin:	Human
Source:	Wheat germ
Protein Type:	Recombinant
Purification tag / Conjugate:	This SMAD6 protein is labelled with GST tag.
Application:	Western Blotting (WB), ELISA, Affinity Purification (AP), Antibody Array (AA)

Product Details

Purpose:	SMAD6 (Human) Recombinant Protein (P01)
Sequence:	MFRSKRSGLV RRLWRSRVVP DREEGGSGGG GGGDEDGSLG SRAEPAPRAR EGGGCGRSEV RPVAPRRPRD AVGQRGAQGA GRRRRAGGPP RPMSEPGAGA GSSLLDVAEP GPGWLPESD CETVTCLFS ERDAAGAPRD ASDPLAGAAL EPAGGGRSRE ARSRLLLLEQ ELKTVTYSLL KRLKERSLDT LLEAVESRGG VPGGCVLVPR ADLRLGGQPA PPQLLLGRLF RWPDLQHAVE LKPLCGCHSF AAAADGPTVC CNPYHFSRLC GPESPPPPYS RLSRDEYKP LDLSDSTLSY TETEATNSLI TAPGEFSDAS MSPDATKPSH WCSVAYWEHR TRVGRLYAVY DQAVSIFYDL PQGSGFCLGQ LNLEQRSESV RRTRSKIGFG ILLSKEPDGV WAYNRGEHPI FVNSPTLDAP GGRALVVRKV PPGYSIKVFD FERISGLQHP EPDAADGPYD PNSVRISFAK GWGPCYSRQF ITSCPCWLEI LLNNPR
Characteristics:	Human SMAD6 full-length ORF (AAH12986.1, 1 a.a. - 496 a.a.) recombinant protein with GST tag at N-terminal.

## Product Details

---

Purification: in vitro wheat germ expression system

## Target Details

---

Target: SMAD6

Alternative Name: SMAD6 ([SMAD6 Products](#))

Background: Synonyms: HsT17432,MADH6,MADH7  
Gene Description: SMAD family member 6  
Gene Name: SMAD6  
Gene Summary: The protein encoded by this gene belongs to the SMAD family of proteins, which are related to Drosophila 'mothers against decapentaplegic' (Mad) and C. elegans Sma. SMAD proteins are signal transducers and transcriptional modulators that mediate multiple signaling pathways. This protein functions in the negative regulation of BMP and TGF-beta/activin-signalling. Multiple transcript variants encoding different isoforms have been found for this gene  
GenBank: BC012986.2, AAH12986.1

Molecular Weight: 80.96 kDa (theoretical)

Gene ID: 4091

Pathways: [Chromatin Binding](#)

## Application Details

---

Application Notes: Optimal working dilution should be determined by the investigator.

Restrictions: For Research Use only

## Handling

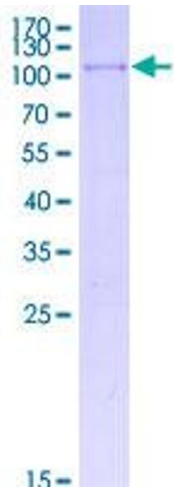
---

Buffer: 50 mM Tris-HCl, 10 mM reduced Glutathione, pH =8.0 in the elution buffer.

Handling Advice: Aliquot to avoid repeated freezing and thawing.

Storage: -80 °C

Storage Comment: Best use within three months from the date of receipt of this protein.



**Image 1.**