



[Go to Product page](#)

Datasheet for ABIN1989816

## SEMA3B Protein (AA 1-132) (GST tag)

### 1 Image

#### Overview

|                               |   |
|-------------------------------|---|
| Quantity:                     | 25 µg   |
| Target:                       | SEMA3B  |
| Protein Characteristics:      | AA 1-132  |
| Origin:                       | Human   |
| Source:                       | Wheat germ  |
| Protein Type:                 | Recombinant   |
| Purification tag / Conjugate: | This SEMA3B protein is labelled with GST tag.                                 |
| Application:                  | Western Blotting (WB), ELISA, Affinity Purification (AP), Antibody Array (AA) |

#### Product Details

|                  |   |
|------------------|---|
| Purpose:         | SEMA3B (Human) Recombinant Protein (P01)  |
| Sequence:        | MYNSVLPTGG RPLFLQVGAN YTFTQIAADR VAAADGHYDV LFIGTDVGTV LKVISVPKGS<br>RPSAEGLLLE ELHVFEDSAA VTSMQISSKR AVPAARRKEW RPQHVVLRRL VSSRAAGTQG<br>VRRGGQQRSL GV |
| Characteristics: | Human SEMA3B full-length ORF (BAC03823.1, 1 a.a. - 132 a.a.) recombinant protein with GST tag at N-terminal.  |
| Purification:    | in vitro wheat germ expression system   |

#### Target Details

|                   |  |
|-------------------|--|
| Target:           | SEMA3B                                     |
| Alternative Name: | SEMA3B ( <a href="#">SEMA3B Products</a> ) |

## Target Details

---

Background: Synonyms: FLJ34863,LUCA-1,SEMA5,SEMAA,SemaA,semaV  
Gene Description: sema domain, immunoglobulin domain (Ig), short basic domain, secreted, (semaphorin) 3B  
Gene Name: SEMA3B  
Gene Summary: The semaphorin/collapsin family of molecules plays a critical role in the guidance of growth cones during neuronal development. The secreted protein encoded by this gene family member is important in axonal guidance and has been shown to act as a tumor suppressor by inducing apoptosis.  
GenBank: AK092182.1, BAC03823.1

---

Molecular Weight: 40.6 kDa (theoretical)

---

Gene ID: 7869

## Application Details

---

Application Notes: Optimal working dilution should be determined by the investigator.

---

Restrictions: For Research Use only

## Handling

---

Buffer: 50 mM Tris-HCl, 10 mM reduced Glutathione, pH =8.0 in the elution buffer.

---

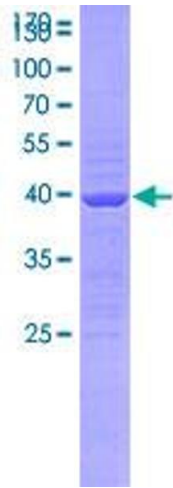
Handling Advice: Aliquot to avoid repeated freezing and thawing.

---

Storage: -80 °C

---

Storage Comment: Best use within three months from the date of receipt of this protein.



**Image 1.**