

Datasheet for ABIN1989900  
**SEMA3C Protein (AA 1-751) (GST tag)**



[Go to Product page](#)

1 Image

## Overview

Quantity:	25 µg
Target:	SEMA3C
Protein Characteristics:	AA 1-751
Origin:	Human
Source:	Wheat germ
Protein Type:	Recombinant
Purification tag / Conjugate:	This SEMA3C protein is labelled with GST tag.
Application:	Western Blotting (WB), ELISA, Affinity Purification (AP), Antibody Array (AA)

## Product Details

Purpose:	SEMA3C (Human) Recombinant Protein (P01)
Sequence:	MAFRTICVLV GVFICSICVK GSSQPQARVY LTFDELRETK TSEYFSLSHH PLDYRILLMD EDQDRIYVGS KDHILSLNIN NISQEALSVF WPASTIKVEE CKMAGKDPTH GCGNFVRVIQ TFNRTHLYVC GSGAFSPVCT YLNRGRSED QVFMIDSKCE SGKGRCSFNP NVNTVSVMIN EELFSGMYID FMGTDAAIFR SLTKRNAVRT DQHNSKWLSE PMFVDAHVIP DGTDPNDAKV YFFFKEKLT DNNRSTKQIHS MIARICPNDT GGLRSLVNKW TTFLKARLVC SVTDEDGPET HFDELEDVFL LETDNPRTTL VYGIFTTSSS VFKGSAVCVY HLSDIQTVFN GPFAHKEGPN HQLISYQGRI PYPRPGTCPG GAFTPNMRTT KEFPDDVVT F IRNHPLMYSN IYPIHKRPLI VRIGTDYKYT KIAVDRVNAA DGRYHVLFLG TDRGTVQKVV VLPTNNSVSG ELILEELEV F KNHAPITTMK ISSKKQQLYV SSNEGVSQVS LHRCHYGT A CADCCCLARDP YCAWDGHSCS RFYPTGKRRS RRQDVRHGNP LTQCRGFNLK AYRNAAEIVQ YGVKNNTTFL ECAPKSPQAS IKWLLQKDKD RRKEVKLNER IIATSQGLLI RSVQGSQGL YHCIATENSF KQTIKINFK

## Product Details

---

VLDSEMVAVV TDKWSPWTWA SSVRALPFHP KDIMGAFSHS EMQMINQYCK DTRQQHQQGD  
ESQKMRGDYG KLKALINSRK SRNRRNQLPE S

Characteristics: Human SEMA3C full-length ORF (AAH30690.1, 1 a.a. - 751 a.a.) recombinant protein with GST tag at N-terminal.

Purification: in vitro wheat germ expression system

## Target Details

---

Target: SEMA3C

Alternative Name: SEMA3C ([SEMA3C Products](#))

Background: Full Gene Name: sema domain, immunoglobulin domain (Ig), short basic domain, secreted, (semaphorin) 3C  
Synonyms: SEMAE, SemE

Molecular Weight: 111.6 kDa (theoretical)

Gene ID: 10512

## Application Details

---

Application Notes: Optimal working dilution should be determined by the investigator.

Comment: Preparation method: in vitro, wheat germ expression system  
Product Quality tested by: 12.5% SDS-PAGE Stained with Coomassie Blue

Restrictions: For Research Use only

## Handling

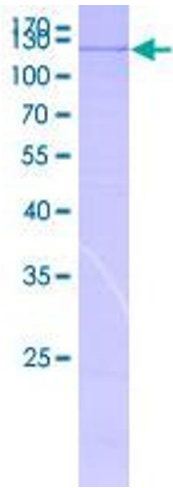
---

Buffer: 50 mM Tris-HCl, 10 mM reduced Glutathione, pH =8.0 in the elution buffer.

Handling Advice: Aliquot to avoid repeated freezing and thawing.

Storage: -80 °C

Storage Comment: Best use within three months from the date of receipt of this protein.



**Image 1.**