



Datasheet for ABIN1990055  
**GTSE1 Protein (AA 1-720) (GST tag)**



[Go to Product page](#)

1 Image

Overview

Quantity:	25 µg
Target:	GTSE1
Protein Characteristics:	AA 1-720
Origin:	Human
Source:	Wheat germ
Protein Type:	Recombinant
Purification tag / Conjugate:	This GTSE1 protein is labelled with GST tag.
Application:	ELISA, Western Blotting (WB), Affinity Purification (AP), Antibody Array (AA)

Product Details

Purpose:	GTSE1 (Human) Recombinant Protein (P02)
Sequence:	MDDPKKEDIL LLADEKDFDF LSLSSSSANE DDEVFFGPFH HKERCIAASL ELNNPVPEQP PLPTSESPFA WSPLAGEKVFV EYKAEHLLA LHISSSRNQ AAQAAKPEDP RSQGVVERFIQ ESKLKINLFE KEKEMKKSPT SLKRETYYLS DSPLLGPVVG EPRLLASSPA LPSSGAQARL TRAPGPPHSA HALPRESCTA HAASQAATQR KPGTKLLLP AASVRGRSIP GAAEKPKKEI PASPSRTKIP AEKESHRDVL PDKPAPGAVN VPAAGSHLGQ GKRAIPVPNK LGLKKTLLKA PGSTSNLARK SSSGPVWSGA SSACTIONAVG KAKSSEFASI PANSSRPLSN ISKSGRMGPA MLRPALPAGP VGASSWQAKR VDVSELAEEQ LTAPPSASPT QPQTPEGGGQ WLNSSCAWSE SSQLNKTRSI RRRDSCLSNK TKVMPTPTNQ FKIPKFSIGD SPDSSTPKLS RAQRPQSCTS VGRVTVHSTP VRRSSGPAPQ SLLSARRVSA LPTPASRRCS GLPPMTPKTM PRAVGSPLCV PARRRSSEPR KNSAMRTEPT RESNRKTDSR LVDVSPDRGS PPSRVPQALN FSPEEDSTF SKSTATEVAR EEAKPGGDAA PSEALLVDIK LEPLAVTPDA ASQPLIDLPL IDFCDTPEAH

## Product Details

---

VAVGSESRPL IDLMTNTPDM NKNVAKPSPV VGQLIDLSSP LIQLSPEADK ENVDSPLLKF

---

Characteristics:	Human GTSE1 full-length ORF (BAG37928.1, 1 a.a. - 720 a.a.) recombinant protein with GST tag at N-terminal.
Purification:	in vitro wheat germ expression system

---

## Target Details

---

Target:	GTSE1
Alternative Name:	GTSE1 ( <a href="#">GTSE1 Products</a> )
Background:	<p>Synonyms: B99</p> <p>Gene Description: G-2 and S-phase expressed 1</p> <p>Gene Name: GTSE1</p> <p>Gene Summary: The protein encoded by this gene is only expressed in the S and G2 phases of the cell cycle, where it colocalizes with cytoplasmic tubulin and microtubules. In response to DNA damage, the encoded protein accumulates in the nucleus and binds the tumor suppressor protein p53, shuttling it out of the nucleus and repressing its ability to induce apoptosis.</p> <p>GenBank: AK315550.1, BAG37928.1</p>
Molecular Weight:	105.6 kDa (theoretical)
Gene ID:	51512

---

## Application Details

---

Application Notes:	Optimal working dilution should be determined by the investigator.
Restrictions:	For Research Use only

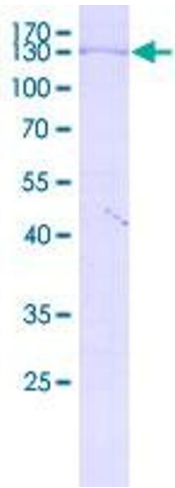
---

## Handling

---

Buffer:	50 mM Tris-HCl, 10 mM reduced Glutathione, pH =8.0 in the elution buffer.
Handling Advice:	Aliquot to avoid repeated freezing and thawing.
Storage:	-80 °C
Storage Comment:	Best use within three months from the date of receipt of this protein.

---



**Image 1.**