

Datasheet for ABIN1990369
MCM8 Protein (AA 1-840) (GST tag)



[Go to Product page](#)

1 Image

Overview

Quantity:	25 µg
Target:	MCM8
Protein Characteristics:	AA 1-840
Origin:	Human
Source:	Wheat germ
Protein Type:	Recombinant
Purification tag / Conjugate:	This MCM8 protein is labelled with GST tag.
Application:	ELISA, Western Blotting (WB), Affinity Purification (AP), Antibody Array (AA)

Product Details

Purpose:	MCM8 (Human) Recombinant Protein (P01)
Sequence:	<p>MNGEYRGRGF GRGRFQSWKR GRGGGNFSGK WREREHRPDL SKTTGKRTSE QTPQFLLSTK TPQSMQSTLD RFIPYKGWKL YFSEVYSDSS PLIEKIQAFE KFFTRHIDLY DKDEIERKGS ILVDFKELTE GGEVTNLIPD IATELRDAPE KTLACMGLAI HQVLTkdLER HAAELQAQEG LSNDGETMVN VPHIHARVYN YEPLTQLKNV RANYYGKYIA LRGTVVRVSN IKPLCTKMAF LCAACGEIQS FPLPDGKYSL PTKCPVPVCR GRSFTALRSS PLTVTMDWQS IKIQELMSDD QREAGRIPRT IECELVHDLV DSCVPGDVT ITGIVKVSNA EEGSRNKNDK CMFLLYIEAN SISNSKGQKT KSSDGGCKHG MLMEFSLKDL YAIQEIQAE NLFKLIVNSL CPVIFGHEL KAGLALALFG GSQKYADDKN RIPIRGDPHI LVVGDPLGK SQMLQAACNV APRGVYVCGN TTTTSGTLVT LSKDSSSGDF ALEAGALVLG DQGICGIDF DKMGNQHqAL LEAMEQQSIS LAKAGVVCSL PARTSIIAAA NPVGGHYNKA KTVSENKMG SALLSRFDLV FILLDTPNEH HDHLLSEHVI AIRAGKQRTI SSATVARMNS QDSNTSVLEV VSEKPLSERL KVVPGETIDP</p>

Product Details

IPHQLLRKYI GYARQYVYPR LSTEAARVLQ DFYLELRKQS QRLNSSPITT RQLESLIRLT
EARARLELRE EATKEDAEDI VEIMKYSMLG TYSDEFGNLD FERSQHGSGM SNRSTAKRFI
SALNNVAERT YNNIFQFHQL RQIAKELNIQ VADFENFIGS LNDQGYLLKK GPKVYQLQTM

Characteristics: Human MCM8 full-length ORF (BAG37214.1, 1 a.a. - 840 a.a.) recombinant protein with GST tag at N-terminal.

Purification: in vitro wheat germ expression system

Target Details

Target: MCM8

Alternative Name: MCM8 ([MCM8 Products](#))

Background: Full Gene Name: minichromosome maintenance complex component 8
Synonyms: C20orf154,MGC119522,MGC119523,MGC12866,MGC4816,REC,dJ967N21.5

Molecular Weight: 118.8 kDa (theoretical)

Gene ID: 84515

Pathways: [Mitotic G1-G1/S Phases](#), [DNA Replication](#), [Synthesis of DNA](#)

Application Details

Application Notes: Optimal working dilution should be determined by the investigator.

Comment: Preparation method: in vitro, wheat germ expression system
Product Quality tested by: 12.5% SDS-PAGE Stained with Coomassie Blue

Restrictions: For Research Use only

Handling

Buffer: 50 mM Tris-HCl, 10 mM reduced Glutathione, pH =8.0 in the elution buffer.

Handling Advice: Aliquot to avoid repeated freezing and thawing.

Storage: -80 °C

Storage Comment: Best use within three months from the date of receipt of this protein.

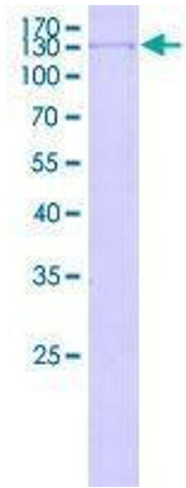


Image 1.