

Datasheet for ABIN199929

anti-PROS1 antibody (AA 16-25)[Go to Product page](#)**1** Image

Overview

Quantity:	100 µg
Target:	PROS1 (PROS)
Binding Specificity:	AA 16-25
Reactivity:	Human
Host:	Rabbit
Clonality:	Polyclonal
Conjugate:	This PROS1 antibody is un-conjugated
Application:	Western Blotting (WB), ELISA

Product Details

Immunogen:	Synthetic peptide from human PROS1. Type of Immunogen: Synthetic peptide
Specificity:	Aa 16-25 of human GSK3 alpha.
Purification:	Immunoaffinity purified

Target Details

Target:	PROS1 (PROS)
Alternative Name:	PROS1 / Protein S (PROS Products)
Background:	Name/Gene ID: PROS1

Target Details

	Synonyms: PROS1, Protein S (alpha), Protein S alpha, Protein Sa, PS22, PS21, Vitamin K-dependent protein S, THPH5, THPH6, PROS, PS24, Protein S, PS23, PS25
Gene ID:	5627
UniProt:	P07225

Application Details

Application Notes:	Approved: ELISA (1:4000 - 1:16000), WB (1:500 - 1:3000) Usage: This affinity-purified antibody has been tested for use in ELISA and by western blot. Specific conditions for reactivity should be optimized by the end user. Expect a band approximately 52 kD in size corresponding to GSK3A by western blotting in the appropriate cell lysate or extract.
Comment:	Target Species of Antibody: Human
Restrictions:	For Research Use only

Handling

Format:	Liquid
Concentration:	Lot specific
Buffer:	0.02 M potassium phosphate, 0.15 M sodium chloride, pH 7.2, 0.01 % sodium azide.
Preservative:	Sodium azide
Precaution of Use:	This product contains Sodium azide: a POISONOUS AND HAZARDOUS SUBSTANCE which should be handled by trained staff only.
Handling Advice:	Avoid cycles of freezing and thawing.
Storage:	-20 °C
Storage Comment:	Store vial at -20°C prior to opening. Dilute only prior to immediate use. For extended storage aliquot contents and freeze at -20°C or below. Avoid freeze-thaw cycles.

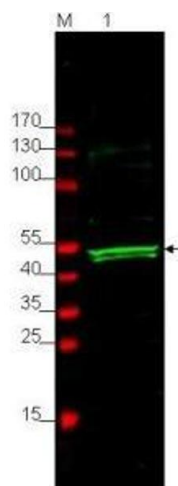


Image 1.