

Datasheet for ABIN199948

anti-DIAPH2 antibody (AA 1085-1101)[Go to Product page](#)**1** Image

Overview

Quantity:	100 µg
Target:	DIAPH2
Binding Specificity:	AA 1085-1101
Reactivity:	Human
Host:	Rabbit
Clonality:	Polyclonal
Conjugate:	This DIAPH2 antibody is un-conjugated
Application:	Western Blotting (WB), ELISA

Product Details

Immunogen:	Synthetic peptide from human DIAPH2.
	Type of Immunogen: Synthetic peptide
Specificity:	Aa 1085-1101 of Human DIA-2.
Purification:	Immunoaffinity purified

Target Details

Target:	DIAPH2
Alternative Name:	DIA / DIAPH2 (DIAPH2 Products)
Background:	Name/Gene ID: DIAPH2

Target Details

	Synonyms: DIAPH2, DRF2, DIA, DIA2, POF, POF2, Protein diaphanous homolog 2, Diaphanous-related formin-2, Diaphorase-2
Gene ID:	1730
UniProt:	O60879

Application Details

Application Notes:	Approved: ELISA (1:12000 - 1:60000), WB (1:1000 - 1:6000) Usage: This affinity purified antibody has been tested for use in ELISA and by western blot. Specific conditions for reactivity should be optimized by the end user. Expect a band approximately 125 kD in size corresponding to DIA-2 by western blotting in the appropriate cell lysate or extract. Alternate splice variants have been described for this protein. This antibody will only react with DIA-156 (isoform 1 of DIA-2). Not recommended for: IHC-P
Comment:	Target Species of Antibody: Human
Restrictions:	For Research Use only

Handling

Format:	Liquid
Concentration:	Lot specific
Buffer:	0.02 M potassium phosphate, 0.15 M sodium chloride, pH 7.2, 0.01 % sodium azide.
Preservative:	Sodium azide
Precaution of Use:	This product contains Sodium azide: a POISONOUS AND HAZARDOUS SUBSTANCE which should be handled by trained staff only.
Handling Advice:	Aliquot to Avoid freeze/thaw cycles. Store undiluted.
Storage:	-20 °C
Storage Comment:	Store at -20°C. Aliquot to avoid freeze-thaw cycles. Store undiluted.

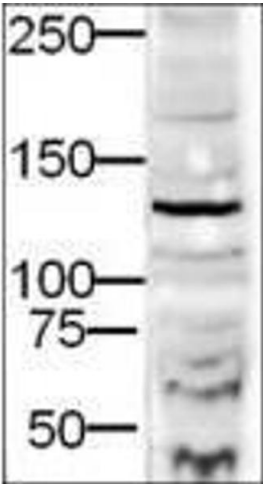


Image 1.